

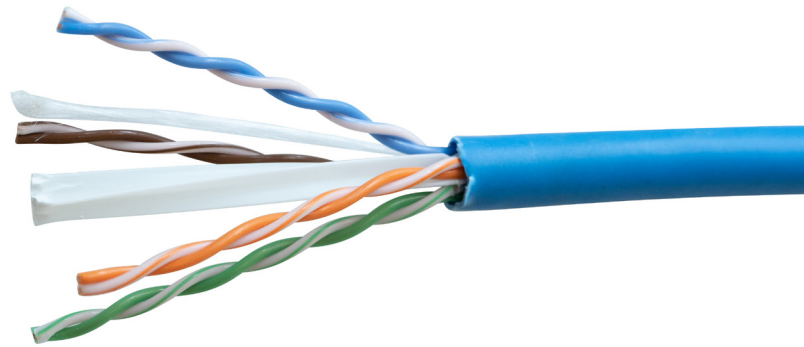


## CATEGORY CABLE WITH LP LISTING

CAT 6E 550 MHZ 23 AWG 4 PAIR SOLID COPPER TYPE CMP-LP (0.6A) 105C UL LISTED

### SPECS

- Limited Power Rated Data Cable
- PoE Applications
- Designed for indoor and plenum installations
- Unshielded twisted pair cable
- TIA/EIA 568-C.2
- NEC ARTICLE 800
- IEEE802.3bt
- UL 444 CMP
- NFPA 262 (UL 910)
- RoHS 3 Directive (EU) 2015/863
- C(UL)US LISTED



| Model #         | Tappan   | Tappan  | Tappan   | Tappan  | Tappan   | Tappan  | Tappan   | Tappan  |
|-----------------|--|---|--|---|--|---|--|---|
| Stock #         | I99997-1A  | I99997-1H   | I99997-2A  | I99997-2H   | I99997-3A  | I99997-3H   | I99997-13A                                       | I99997-13H  |
| UPC             | 032886885815                                     | 032886885839                                      | 032886885846                                     | 032886885853                                      | 029892498160                                     | 029892498108                                      | 032886907197                                     | 029892498405                                      |
| Description     | CAT 6E 550 MHZ<br>23/4P w/Spline Be<br>CMP 1000R | CAT 6E 550 MHZ<br>23/4P w/Spline Be<br>CMP 1000RB | CAT 6E 550 MHZ<br>23/4P w/Spline We<br>CMP 1000R | CAT 6E 550 MHZ<br>23/4P w/Spline We<br>CMP 1000RB | CAT 6E 550 MHZ<br>23/4P w/Spline Yw<br>CMP 1000R | CAT 6E 550 MHZ<br>23/4P w/Spline Yw<br>CMP 1000RB | CAT 6E 550 MHZ<br>23/4P w/Spline Bk<br>CMP 1000R | CAT 6E 550 MHZ<br>23/4P w/Spline Bk<br>CMP 1000RB |
| Package         | Reel   | Reel In Box                                       | Reel   | Reel In Box                                       | Reel   | Reel In Box                                       | Reel   | Reel In Box                                       |
| Weight          | 26 lbs.  | 26 lbs.   | 26 lbs.  | 26 lbs.   | 26 lbs.  | 26 lbs.   | 26 lbs.  | 26 LBS.   |
| Jacket Color    | Blue   | Blue  | White  | White   | Yellow   | Yellow  | Black  | Black   |
| Insulation Type | HDPE   | HDPE  | HDPE   | HDPE  | HDPE   | HDPE  | HDPE   | HDPE  |
| Jacket Type     | LS-PVC   | LS-PVC  | LS-PVC   | LS-PVC  | LS-PVC   | LS-PVC  | LS-PVC   | LS-PVC  |



## CATEGORY CABLE WITH LP LISTING

CAT6 250 MHZ 23 AWG 4 Pair Solid Copper TYPE CMP-LP (0.5A) 75C

### SPECS

- Limited Power Rated Data Cable
- PoE Applications
- Designed for indoor and plenum installations
- Unshielded twisted pair cable
- TIA/EIA 568-C.2
- NEC ARTICLE 800
- IEEE 802.3af
- UL 444 CMP
- NFPA 262 (UL 910)/CSA FT6
- RoHS 3 Directive (EU) 2015/863
- C(UL)US LISTED



| Model #         | Tappan  | Tappan   | Tappan  | Tappan   | Tappan  | Tappan   | Tappan   | Tappan   | Tappan   |
|-----------------|---|--|---|--|---|--|--|--|--|
| Stock #         | I99993-1B                                     | I99993-1H                                      | I99993-2B   | I99993-2H  | I99993-10B  | I99993-10H   | I99993-11B                                     | I99993-11H   | I99993-12B                                     |
| UPC             | 032886885730                                  | 032886885747                                   | 032886768200                                      | 032886757006                                       | 032886906558                                      | 029892498467                                       | 032886906633                                   | 032886906657                                       | 032886906671                                   |
| Description     | CAT6 250 MHZ<br>23/4P SOL BC<br>CMP BE 1000PB | CAT6 250 MHZ<br>23/4P SOL BC<br>CMP BE 1000RIB | CAT6 250 MHZ<br>23/4P SOL<br>BC CMP WHT<br>1000PB | CAT6 250 MHZ<br>23/4P SOL<br>BC CMP WHT<br>1000RIB | CAT6 250 MHZ<br>23/4P SOL<br>BC CMP GRY<br>1000PB | CAT6 250 MHZ<br>23/4P SOL<br>BC CMP GRY<br>1000RIB | CAT6 250 MHZ<br>23/4P SOL BC<br>CMP YEL 1000PB | CAT6 250 MHZ<br>23/4P SOL<br>BC CMP YEL<br>1000RIB | CAT 6 250 MHZ<br>23/4P SOL BC<br>CMP OE 1000PB |
| Package         | Pullbox                                       | Reel In Box                                    | Pullbox   | Reel In Box  | Pullbox   | Reel In Box  | Pullbox  | Reel In Box  | Pullbox  |
| Weight          | 26 lbs.                                       | 26 lbs.  | 26 lbs.   | 26 lbs.  | 26 lbs.   | 26 lbs.  | 26 lbs.  | 26 LBS.  | 26 lbs.  |
| Jacket Color    | Blue  | Blue   | White   | White  | Gray  | Gray   | Yellow   | Yellow   | Orange   |
| Insulation Type | FEP   | FEP  | FEP   | FEP  | FEP   | FEP  | FEP  | FEP  | FEP  |
| Jacket Type     | LS-PVC  | LS-PVC   | LS-PVC  | LS-PVC   | LS-PVC  | LS-PVC   | LS-PVC   | LS-PVC   | LS-PVC   |

| Model #         | Tappan  | Tappan   | Tappan   | Tappan  | Tappan   | Tappan  | Tappan   | Tappan  |   |
|-----------------|---|--|--|---|--|---|--|---|---|
| Stock #         | I99993-12H                                      | I99993-9B                                      | I99993-8B                                      | I99993-8H                                       | I99993-4B                                      | I99993-4H                                       | I99993-13B                                     | I99993-13H                                      |   |
| UPC             | 032886906695                                    | 032886895302                                   | 032886895319                                   | 029892498689                                    | 032886906596                                   | 029892498566                                    | 032886906732                                   | 029892498801                                    |   |
| Description     | CAT 6 250 MHZ<br>23/4P SOL BC<br>CMP OE 1000RIB | CAT 6 250 MHZ<br>23/4P SOL BC<br>CMP GN 1000PB | CAT 6 250 MHZ<br>23/4P SOL BC<br>CMP RD 1000PB | CAT 6 250 MHZ<br>23/4P SOL BC<br>CMP RD 1000RIB | CAT 6 250 MHZ<br>23/4P SOL BC<br>CMP PK 1000PB | CAT 6 250 MHZ<br>23/4P SOL BC<br>CMP PK 1000RIB | CAT 6 250 MHZ<br>23/4P SOL BC<br>CMP BK 1000PB | CAT 6 250 MHZ<br>23/4P SOL BC<br>CMP BK 1000RIB | CAT 6 250 MHZ<br>23/4P SOL BC<br>CMP BK 1000RIB |
| Package         | Reel In Box                                     | Pullbox  | Pullbox  | Reel In Box                                     | Pullbox  | Reel In Box                                     | Pullbox  | Reel In Box                                     |   |
| Weight          | 26 lbs.   | 26 lbs.  | 26 lbs.  | 26 lbs.   | 26 lbs.  | 26 lbs.   | 26 lbs.  | 26 lbs.   |   |
| Jacket Color    | Orange  | Green  | Green  | Red   | Red  | Pink  | Black  | Black   |   |
| Insulation Type | FEP   | FEP  | FEP  | FEP   | FEP  | FEP   | FEP  | FEP   |   |
| Jacket Type     | LS-PVC  | LS-PVC   | LS-PVC   | LS-PVC  | LS-PVC   | LS-PVC  | LS-PVC   | LS-PVC  |   |