



Southwire™

LOW VOLTAGE CATALOG



OUR STORY

Roy Richards, Sr. founded a small construction company in 1937 to erect power poles. Only two and half years later, the company had strung 3,500 miles of cable. In 1950, Mr. Richards went on to start a small, family-owned operation to manufacture electrical wire and cable. Southwire Company opened with only twelve employees, and within the first two years it had shipped 5 million pounds of wire for the transmission and distribution of electricity. Since that time, Southwire has become one of the world's leading manufacturers of wire and cable and an emerging influence in the industrial electrical space. With more than 7,000 employees, the company serves customers in a wide variety of markets across the globe and has introduced many industry-changing innovations like the SCR® continuous casting process, SIMpull Solutions® products and services, and many more.

SOUTHWIRE, THE COMPANY

Southwire Company, LLC is North America's leading manufacturer of electrical wire and cable. Nearly one in two new homes built in the United States contains our wire, and we produce half of the cable used to transmit and distribute electricity throughout the nation. More than half of the world's refined copper passes through one of our SCR® systems, our tools & equipment business continues to grow and our wire plays a key role in the manufacturing of other products.

THE PRODUCTS

To be successful requires products that give you solutions no matter what stage of the project cycle you are in. Our product teams and dedicated resources work together to listen to and work with our customers, creating solutions that deliver unparalleled value through product innovation, safety, and efficiency.

THE SERVICE

Service is more than a word or a phone number; it's a tangible support system that assists you through the entire project cycle. Starting with our own knowledgeable customer service team, to our CableTechSupport™ engineering team, whether in the office or in the field, we're there to lend a hand, when you need it most.



TABLE OF CONTENTS

LOW VOLTAGE CABLES

- Access Control Cable..... 5
- Fire Alarm 6
- Multiconductor Plenum Rated 9
- Multiconductor Riser Rated 11
- Low Voltage Landscape Lighting ULEC..... 13
- Coax RG59, RG6, CATV, CCTV, Combo & more 14
- Category Cables..... 16
- Speaker Cable 20
- Security Alarm Cable 21
- Low Voltage Dimming..... 22
- Control System Cables..... 23
- Speaker Professional Cable 24

LOW VOLTAGE WIRES

Southwire has a long history of innovating to meet customer needs. Our vast selection of Low Voltage products keeps pace with new technologies. As a premier diversified electrical company, we pride ourselves on manufacturing products that comply with safety and market requirements.

- Fire Alarm Riser & Plenum
- Fire Alarm Circuit Defender 2 Hour Rated
- Access Control & Burglar Alarm Cables
- POE cables
- Select Cables for Category Data CAT5e, CAT6 & CAT6A
- Multi-Conductor Security Riser & Plenum
- Select Coax Cables
- Landscape Lighting
- Low Voltage Dimming
- Building Management Control Cable
- Audio Cable & Speaker wire



ACCESS CONTROL CABLE

ACCESS CONTROL CABLE



CONSTRUCTION

- CONDUCTOR Stranded bare copper
- INSULATION PVC on riser rated Cables, LS-PVC on plenum rated cables
- Popular Combo color & function
 CARD READER: Black & Red / Green & White / Orange & Brown (3 pr 22 AWG)
 LOCK POWER: Black, Red, White, Green (4C 18 AWG)
 REQUEST EXIT/SPARE: Black, Red, White, Green (4C 22 AWG)
 DOOR CONTACT: Black, Red (2C 22 AWG)

SPECIFICATIONS

- VOLTAGE 300V
- TEMPERATURE 0 - 75C

PLENUM

- UL 1424 FPLP, NEC article 760
- UL 13 CL3P, NEC article 725
- UL 444 CMP, NEC article 800
- NFPA 262 (UL 910) / CSA FT6
- CSA C22.2 CMG by C(UL)
- Directive (EU) 2015/863 – RoHS 3

RISER

- UL 1424 FPLR, NEC article 760
- UL 13 CL3R, NEC article 725
- UL 444 CMR, NEC article 800
- UL 1666 Vertical Riser / CSA FT4 (UL 1581)
- CSA C22.2 CMG by C(UL)
- Directive (EU) 2015/863 – RoHS 3



PRODUCT BASE #	DESCRIPTION	RATING	UL TYPE	SHIELDING	CONDUCTOR TYPE	CB NOM DIA MIL	CB LBS/ MFT
H91601	22/2+22/4+22/3PR+18/4 SH CMP/CL3P/FPLP	CMP/CL3P/FPLP CMP FT6	PLENUM	SHIELDED	STRANDED	412	102.04
H91602	22/4+22/3PR SH+22/2+18/4 CMP/CL3P/FPLP	CMP/CL3P/FPLP CMP FT6	PLENUM	22/3PR SH	STRANDED	405	94.35
H92091	22/2+22/4+22/3PR+18/4 CMR/CL3R/FPLR	CMR/CL3R/FPLR SUN RES CMG FT4	RISER	22/3PR SH	STRANDED	430	93.44

ACCESS CONTROL CABLE

FIRE ALARM CIRCUIT DEFENDER™ 2 HOUR RATED

FIRE ALARM CIRCUIT DEFENDER™ 2 HOUR RATED



APPLICATION

Circuit Defender™ cables have been qualified and listed to the demanding requirements of UL 2196 and CAN/ULC-S139 Test for Fire Resistive Cables, and are UL listed Types FPLR/CMR and CSA Certified FAS. Circuit Defender™ Cables meet various industry code requirements (NFPA 70, NFPA 101, NFPA 130, and NFPA 502) for Fire Resistance according to UL 2196 when selected and installed per applicable codes including federal, state, and local and municipal rules, laws and regulations.

CONSTRUCTION

- CONDUCTORS: 18 AWG, 16 AWG, 14 AWG Oxygen-free solid bare copper (OFHC) conductors
- INSULATION: SILICONE RUBBER COLORS: Black, Red.
- TAPE: MICA
- JACKET: PVC, RED

SPECIFICATIONS

- UL1424 Listed FPLR
- UL 444 Listed CMR
- CSA C22.2 No.208 FAS
- UL 2196 and CAN/ULC-S139, UL Electrical Circuit Integrity System #44 (FHIT/7 44)
- NFPA 70, NFPA 101, NFPA 130, and NFPA 502
- UL Listed File #E75610 & #E118871
- CSA Certified LL90458
- Directive (EU) 2015/863 – RoHS 3
- RoHS (European Directive 2002/95/EC)



FIRE ALARM CIRCUIT DEFENDER™

TYPE	PRODUCT BASE #	DESCRIPTION	RATING	UL TYPE	SHIELDING	CONDUCTOR TYPE	CB NOM DIA MIL	CB LBS/ MFT
Fire Alarm Circuit Defender™ 2 Hour Rated	SC4001-2Q	FACI 18/2 OFHC N/S FPLR/CMR or FAS 5KR	FPLR/CMR/ 90C/ R26267 FRR 2-HR (FHIT/7 44)	Riser	Unshielded	Solid	338	41.64
Fire Alarm Circuit Defender™ 2 Hour Rated	SC5001-2Q	FACI 16/2 OFHC N/S FPLR/CMR or FAS 5KR	FPLR/CMR/ 90C/ R26267 FRR 2-HR (FHIT/7 44)	Riser	Unshielded	Solid	364	56.00
Fire Alarm Circuit Defender™ 2 Hour Rated	SC6001-2Q	FACI 14/2 OFHC N/S FPLR/CMR or FAS 5KR	FPLR/CMR/ 90C/ R26267 FRR 2-HR (FHIT/7 44)	Riser	Unshielded	Solid	388	68.10
Fire Alarm Circuit Defender™ 2 Hour Rated	SC4001-2F	FACI 18/2 OFHC N/S FPLR/CMR or FAS 5KR	FPLR/CMR/ 90C/ R26267 FRR 2-HR (FHIT/7 44)	Riser	Unshielded	Solid	338	41.64
Fire Alarm Circuit Defender™ 2 Hour Rated	SC5001-2F	FACI 16/2 OFHC N/S FPLR/CMR or FAS 5KR	FPLR/CMR/ 90C/ R26267 FRR 2-HR (FHIT/7 44)	Riser	Unshielded	Solid	364	56.00
Fire Alarm Circuit Defender™ 2 Hour Rated	SC6001-2F	FACI 14/2 OFHC N/S FPLR/CMR or FAS 5KR	FPLR/CMR/ 90C/ R26267 FRR 2-HR (FHIT/7 44)	Riser	Unshielded	Solid	388	68.10

FIRE ALARM FPLP

FIRE ALARM FPLP



75°C 300V PLENUM RATED

APPLICATION

- Fire protective signaling circuits. Also for smoke detectors, voice communications, audio control and initiating circuits. Article 760 of the NEC. For use in plenum spaces.

CONSTRUCTION

- CONDUCTOR Solid Bare Copper or Stranded Bare Copper
- INSULATION LS-PVC
- COLOR CODE Black, Red, Green, Yellow. Various jacket colors available.
- ASSEMBLY Cabled with ripcord, and jacketed
- JACKET LS-PVC
- Both insulation and jacket materials are silicone free

SPECIFICATIONS

- UL 1424 FPLP, NEC article 760
- UL 13 CL3P, NEC article 725
- UL 444 CMP, NEC article 800
- FLAME TEST
- RoHS (European Directive 2002/95/EC)



TYPE	PRODUCT BASE #	DESCRIPTION	RATING	UL TYPE	SHIELDING	CONDUCTOR TYPE	CB NOM DIA MIL	CB LBS/ MFT
FIRE ALARM PLENUM UNSHIELDED	G40172	FA 18/2 STR CU N/S FPLP	FPLP/CMP/CL3P FT6	PLENUM	NOT SHIELDED	STRANDED	152	16.40
FIRE ALARM PLENUM UNSHIELDED	G40005	FA 18/2 SOL CU N/S FPLP	FPLP/CMP/CL3P FT6	PLENUM	NOT SHIELDED	SOLID	144	15.78
FIRE ALARM PLENUM UNSHIELDED	G40505	FA 18/4 SOL CU N/S FPLP	FPLP/CMP/CL3P FT6	PLENUM	NOT SHIELDED	SOLID	168	28.30
FIRE ALARM PLENUM UNSHIELDED	G40503	FA 18/6 SOL CU N/S FPLP	FPLP/CMP/CL3P FT6	PLENUM	NOT SHIELDED	SOLID	184	40.57
FIRE ALARM PLENUM UNSHIELDED	G50032	FA 16/2 SOL CU N/S FPLP	FPLP/CMP/CL3P FT6	PLENUM	NOT SHIELDED	SOLID	164	22.52
FIRE ALARM PLENUM UNSHIELDED	G50359	FA 16/2STRCU N/S FPLP	FPLP/CMP/CL3P FT6	PLENUM	NOT SHIELDED	STRANDED	180	24.12
FIRE ALARM PLENUM UNSHIELDED	G50370	FA 16/4 SOL CU N/S FPLP	FPLP/CMP/CL3P FT6	PLENUM	NOT SHIELDED	SOLID	196	41.43
FIRE ALARM PLENUM UNSHIELDED	G60210	FA 14/2STRCU N/S FPLP	FPLP/CMP/CL3P FT6	PLENUM	NOT SHIELDED	STRANDED	206	34.97
FIRE ALARM PLENUM UNSHIELDED	G60004	FA 14/2 SOL CU N/S FPLP	FPLP/CMP/CL3P FT6	PLENUM	NOT SHIELDED	SOLID	196	33.97
FIRE ALARM PLENUM UNSHIELDED	G60347	FA 14/4 SOL CU N/S FPLP	FPLP/CMP/CL3P FT6	PLENUM	NOT SHIELDED	SOLID	226	61.81
FIRE ALARM PLENUM UNSHIELDED	G70090	FA 12/2STRCU N/S FPLP	FPLP/CMP/CL3P FT6	PLENUM	NOT SHIELDED	STRANDED	251	52.23
FIRE ALARM PLENUM UNSHIELDED	G70009	FA 12/2 SOL CU N/S FPLP	FPLP/CMP/CL3P FT6	PLENUM	NOT SHIELDED	SOLID	226	49.45
FIRE ALARM PLENUM SHIELDED	G40006	FA 18/2 SOL CU OAS FPLP	FPLP/CMP/CL3P FT6	PLENUM	SHIELDED	SOLID	152	18.56
FIRE ALARM PLENUM SHIELDED	G40504	FA 18/4 SOL CU OAS FPLP	FPLP/CMP/CL3P FT6	PLENUM	SHIELDED	SOLID	183	30.79
FIRE ALARM PLENUM SHIELDED	G50013	FA 16/2 SOL CU OAS FPLP	FPLP/CMP/CL3P FT6	PLENUM	SHIELDED	SOLID	176	24.23
FIRE ALARM PLENUM SHIELDED	G50369	FA 16/4 SOL CU OAS FPLP	FPLP/CMP/CL3P FT6	PLENUM	SHIELDED	SOLID	206	43.95
FIRE ALARM PLENUM SHIELDED	G60121	FA 14/2STRCU OAS FPLP	FPLP/CMP/CL3P FT6	PLENUM	SHIELDED	STRANDED	216	36.53
FIRE ALARM PLENUM SHIELDED	G60346	FA 14/4 SOL CU OAS FPLP	FPLP/CMP/CL3P FT6	PLENUM	SHIELDED	SOLID	234	64.61
FIRE ALARM PLENUM SHIELDED	G60025	FA 14/2 SOL CU OAS FPLP	FPLP/CMP/CL3P FT6	PLENUM	SHIELDED	SOLID	196.2	36.15
FIRE ALARM PLENUM SHIELDED	G70019	FA 12/2 SOL CU OAS FPLP	FPLP/CMP/CL3P FT6	PLENUM	SHIELDED	SOLID	231	52.15

FIRE ALARM FPLP

FIRE ALARM FPLR

FIRE ALARM FPLR



75°C 300V RISER RATED

APPLICATION

- Fire protective signaling circuits. Also for smoke detectors, voice communications, audio control and initiating circuits. Article 760 of the NEC.

CONSTRUCTION

- CONDUCTOR Solid Bare Copper or Stranded Bare Copper
- INSULATION PVC
- COLOR CODE Black, Red, Green, Yellow. (4C 18AWG Stranded is Black, Red, White, Green) Various jacket colors available.
- SHIELDING Table 341UR and 342UR are for unshielded cables.
- ASSEMBLY Cabled with ripcord, and jacketed.
- JACKET PVC
- Both insulation and jacket materials are silicone free
- Plus assorted jacket colors available

SPECIFICATIONS

- UL 1424 FPLR, NEC article 760
- UL 13 CL3R, NEC article 725; UL 444 CMR, NEC article 800
- FLAME TEST UL 1666; FT4
- VOLTAGE 300V
- TEMPERATURE 75°C
- SUITABLE USE: Fire protective signaling circuits, smoke detectors, audio, control, and initiating circuits. (UL) Listed / (UL) FPLR



FIRE ALARM FPLR

TYPE	PRODUCT BASE #	DESCRIPTION	RATING	UL TYPE	SHIELDING	CONDUCTOR TYPE	CB NOM DIA MIL	CB LBS/ MFT
FIRE ALARM RISER UNSHIELDED	F20427	FA 22/4SOL CU CMR/CL3R/FPLR	FPLR/CMP/CL3P SUN RES CMG FT4	RISER	NOT SHIELDED	SOLID	118	11.16
FIRE ALARM RISER UNSHIELDED	F40021	FA 18/2SOLCU N/S FPLR	FPLR/CMP/CL3P SUN RES CMG FT9	RISER	NOT SHIELDED	SOLID	132	13.93
FIRE ALARM RISER UNSHIELDED	F40568	FA 18/4SOLCU N/S FPLR	FPLR/CMP/CL3P SUN RES CMG FT7	RISER	NOT SHIELDED	SOLID	155.5	25.61
FIRE ALARM RISER UNSHIELDED	F40566	FA 18/6SOLCU N/S FPLR	FPLR/CMP/CL3P SUN RES CMG FT5	RISER	NOT SHIELDED	SOLID	196	39.04
FIRE ALARM RISER UNSHIELDED	F50004	FA 16/2SOLCU N/S FPLR	FPLR/CMP/CL3P SUN RES CMG FT13	RISER	NOT SHIELDED	SOLID	154	20.93
FIRE ALARM RISER UNSHIELDED	F50289	FA 16/2 STR CU N/S FPLR	FPLR/CMP/CL3P SUN RES CMG FT14	RISER	NOT SHIELDED	STRANDED	184	23.46
FIRE ALARM RISER UNSHIELDED	F50383	FA 16/4SOLCU N/S FPLR	FPLR/CMP/CL3P SUN RES CMG FT11	RISER	NOT SHIELDED	SOLID	180	38.44
FIRE ALARM RISER UNSHIELDED	F60001	FA 14/2SOLCU N/S FPLR	FPLR/CMP/CL3P SUN RES CMG FT18	RISER	NOT SHIELDED	SOLID	190	32.01
FIRE ALARM RISER UNSHIELDED	F60355	FA 14/4SOLCU N/S FPLR	FPLR/CMP/CL3P SUN RES CMG FT16	RISER	NOT SHIELDED	SOLID	224	60.17
FIRE ALARM RISER UNSHIELDED	F60340	FA 14/2 STR CU N/S FPLR	FPLR/CMP/CL3P SUN RES CMG FT19	RISER	NOT SHIELDED	STRANDED	218	35.10
FIRE ALARM RISER SHIELDED	F40015	FA 18/2SOLCU OAS FPLR	FPLR/CMP/CL3P SUN RES CMG FT8	RISER	SHIELDED	SOLID	153	16.53
FIRE ALARM RISER SHIELDED	F40567	FA 18/4SOLCU OAS FPLR	FPLR/CMP/CL3P SUN RES CMG FT6	RISER	SHIELDED	SOLID	174	28.08
FIRE ALARM RISER SHIELDED	F50010	FA 16/2SOLCU OAS FPLR	FPLR/CMP/CL3P SUN RES CMG FT12	RISER	SHIELDED	SOLID	159	23.03
FIRE ALARM RISER SHIELDED	F50382	FA 16/4SOLCU OAS FPLR	FPLR/CMP/CL3P SUN RES CMG FT10	RISER	SHIELDED	SOLID	202	41.53
FIRE ALARM RISER SHIELDED	F60030	FA 14/2SOLCU OAS FPLR	FPLR/CMP/CL3P SUN RES CMG FT17	RISER	SHIELDED	SOLID	212	34.86
FIRE ALARM RISER SHIELDED	F60354	FA 14/4SOLCU OAS FPLR	FPLR/CMP/CL3P SUN RES CMG FT15	RISER	SHIELDED	SOLID	226	62.77
FIRE ALARM RISER UNSHIELDED	F70092	FA 12/2STRCU N/S FPLR	FPLR/CMP/CL3P SUN RES CMG FT20	RISER	NOT SHIELDED	SOLID	266	52.43
FIRE ALARM RISER SHIELDED	F70015	FA 12/2SOLCU OAS FPLR	FPLR/CMP/CL3P SUN RES CMG FT21	RISER	SHIELDED	SOLID	249	52.22
FIRE ALARM RISER UNSHIELDED	F70004	FA 12/2SOLCU N/S FPLR	FPLR/CMP/CL3P SUN RES CMG FT22	RISER	NOT SHIELDED	SOLID	232	49.18

MULTICONDUCTOR PLENUM RATED SHIELDED BARE COPPER/LS-PVC

MULTICONDUCTOR PLENUM RATED SHIELDED BARE COPPER/LS-PVC



WE'VE GOT IT
MADE IN AMERICA™



75°C, 300V PLENUM RATED

APPLICATION

Remote Control, Signalling, and Power-Limited circuits per NEC Article 725 22AWG through 16 AWG also communication circuits per NEC Article 800. Security, sound and audio, speaker cable, public address, intercom, sound reinforcement, alarm and access control circuits and power-limited controls. Where routed in plenum spaces.

CONSTRUCTION

- CONDUCTOR Stranded or solid bare copper as indicated on on individual product specifications.
- INSULATION LS-PVC
- COLOR CODE Listed below chart. Also listed for each item on individual specification sheets.
- SHIELDING Overall - Aluminum foil, polyester reinforced tape and stranded tinned copper drain wire.
- ASSEMBLY Cabled, with ripcord, and jacketed.
- JACKET LS-PVC

SPECIFICATIONS

- UL 1424 FPLP, NEC article 760
- UL 13 CL3P, NEC article 725
- UL 444 CMP
- CSA C22.2 No. 214 CMP
- FLAME TEST NFPA 262 (UL 910) / CSA FT6
- Directive (EU) 2015/863 – RoHS 3

TYPE	PRODUCT BASE #	DESCRIPTION	RATING	UL TYPE	SHIELDING	CONDUCTOR TYPE	CB NOM DIA MIL	CB LBS/ MFT
MULTICONDUCTOR SHIELDED PLENUM	P29841	SY 22/2P STR CU SH CMP/CL3P	CMP/CL3P/FPLP FT6	PLENUM	SHIELDED	STRANDED	149	18.01
	P20032	SY 22/2 STR CU OAS CMP/CL3P	CMP/CL3P/FPLP FT6	PLENUM	SHIELDED	STRANDED	124	11.34
	P20043	SY 22/3 STR CU OAS CMP/CL3P	CMP/CL3P/FPLP FT6	PLENUM	SHIELDED	STRANDED	133	14.82
	P20270	SY 22/4 STR CU OAS CMP/CL3P	CMP/CL3P/FPLP FT6	PLENUM	SHIELDED	STRANDED	142	17.84
	P20019	SY 22/6 STR CU OAS CMP/CL3P	CMP/CL3P/FPLP FT6	PLENUM	SHIELDED	STRANDED	168.5	24.33
	P20037	SY 22/8 STR CU OAS CMP/CL3P	CMP/CL3P/FPLP FT6	PLENUM	SHIELDED	STRANDED	185	31.11
	P20023	SY 22/12 STR CU OAS CMP/CL3P	CMP/CL3P/FPLP FT6	PLENUM	SHIELDED	STRANDED	226	44.53
	P30006	SY 20/2 STR CU OAS CMP/CL3P	CMP/CL3P/FPLP FT6	PLENUM	SHIELDED	STRANDED	135	14.07
	P30003	SY 20/4 STR CU OAS CMP/CL3P	CMP/CL3P/FPLP FT6	PLENUM	SHIELDED	STRANDED	156	23.17
	P40133	SY 18/2 STR CU OAS CMP/CL3P	CMP/CL3P/FPLP FT6	PLENUM	SHIELDED	STRANDED	161	19.41
	P49995	SY 18/2P STR CU SH CMP/CL3P	CMP/CL3P/FPLP FT6	PLENUM	SHIELDED	STRANDED	183.8	32.50
	P40032	SY 18/3 STR CU OAS CMP/CL3P	CMP/CL3P/FPLP FT6	PLENUM	SHIELDED	STRANDED	165	25.39
	P40073	SY 18/4 STR CU OAS CMP/CL3P	CMP/CL3P/FPLP FT6	PLENUM	SHIELDED	STRANDED	186	32.59
	P40040	SY 18/6 STR CU OAS CMP/CL3P	CMP/CL3P/FPLP FT6	PLENUM	SHIELDED	STRANDED	222.5	46.13
	P40070	SY 18/8 STR CU OAS CMP/CL3P	CMP/CL3P/FPLP FT6	PLENUM	SHIELDED	STRANDED	245	60.24
	P40041	SY 18/10 STR CU OAS CMP/CL3P	CMP/CL3P/FPLP FT6	PLENUM	SHIELDED	STRANDED	289	74.28
	P50002	SY 16/2 STR CU OAS CMP/CL3P	CMP/CL3P/FPLP FT6	PLENUM	SHIELDED	STRANDED	185	25.07
	P50023	SY 16/4 STR CU OAS CMP/CL3P	CMP/CL3P/FPLP FT6	PLENUM	SHIELDED	STRANDED	220	46.36
	P60022	SY 14/2 STR CU OAS CMP/CL3P	CL3P/ FPLP FT6	PLENUM	SHIELDED	STRANDED	216	36.54
	P70006	SY 12/2 STR CU OAS CMP/CL3P	CL3P/ FPLP FT6	PLENUM	SHIELDED	STRANDED	256	55.00
P70006	SY 12/2 STR CU OAS CMP/CL3P	CMP/CL3P/FPLP FT6	PLENUM	SHIELDED	STRANDED	256	55.00	

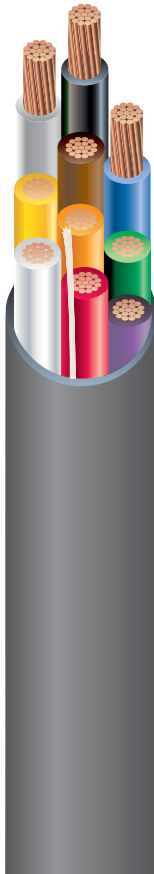
MULTICONDUCTOR

MULTICONDUCTOR PLENUM RATED UNSHIELDED STRANDED BARE COPPER/LS-PVC

MULTICONDUCTOR PLENUM RATED UNSHIELDED STRANDED BARE COPPER / LS-PVC



WE'VE GOT IT
MADE IN AMERICA™



75°C, 300V PLENUM RATED

APPLICATION

Remote Control, Signalling, and Power-Limited circuits per NEC Article 725. 22AWG - 6 AWG also as communication circuits per NEC Article 800. Security, sound and audio, speaker cable, public address, intercom, sound reinforcement, alarm and access control circuits and power-limited controls. Routed in plenum spaces.

CONSTRUCTION

- CONDUCTOR Stranded or solid bare copper as indicated on individual product specifications.
- INSULATION LS-PVC
- COLOR CODE Listed below chart. Also listed for each item on individual specification sheets.
- SHIELDING Unshielded
- ASSEMBLY Cabled, with ripcord, and jacketed.
- JACKET LS-PVC

SPECIFICATIONS

- UL 1424 FPLP, NEC article 760
- UL 13 CL3P, NEC article 725
- UL 444 CMP
- CSA C22.2 No. 214 CMP
- FLAME TEST NFPA 262 (UL 910) / CSA FT6
- Directive (EU) 2015/863 – RoHS 3

MULTICONDUCTOR

TYPE	PRODUCT BASE #	DESCRIPTION	RATING	UL TYPE	SHIELDING	CONDUCTOR TYPE	CB NOM DIA MIL	CB LBS/ MFT
MULTICONDUCTOR UNSHIELDED PLENUM	P20012	22/1P SH+22/1P N/S STR CU FPLP	CMP/CL3P/FPLP FT6	PLENUM	NOT SHIELDED	STRANDED	144	17.69
	P20031	SY 22/2 STR CU N/S CMP/CL3P	CMP/CL3P/FPLP FT6	PLENUM	NOT SHIELDED	STRANDED	118	8.986
	P20035	SY 22/4 STR CU N/S CMP/CL3P	CMP/CL3P/FPLP FT6	PLENUM	NOT SHIELDED	STRANDED	136.6	15.31
	P20008	SY 22/6 STR CU N/S CMP/CL3P	CMP/CL3P/FPLP FT6	PLENUM	NOT SHIELDED	STRANDED	163	21.88
	P20018	SY 22/8 STR CU N/S CMP/CL3P	CMP/CL3P/FPLP FT6	PLENUM	NOT SHIELDED	STRANDED	177	28.07
	P20044	SY 22/12 STR CU N/S CMP/CL3P	CMP/CL3P/FPLP FT6	PLENUM	NOT SHIELDED	STRANDED	216	40.79
	P30016	SY 20/2 STR CU N/S CMP/CL3P	CMP/CL3P/FPLP FT6	PLENUM	NOT SHIELDED	STRANDED	132	12.10
	P40020	SY 18/2 STR CU N/S CMP/CL3P	CMP/CL3P/FPLP FT6	PLENUM	NOT SHIELDED	STRANDED	152	16.41
	P40024	SY 18/3 STR CU N/S CMP/CL3P	CMP/CL3P/FPLP FT6	PLENUM	NOT SHIELDED	STRANDED	160	23.00
	P40031	SY 18/4 STR CU N/S CMP/CL3P	CMP/CL3P/FPLP FT6	PLENUM	NOT SHIELDED	STRANDED	181	30.16
	P40065	SY 18/6 STR CU N/S CMP/CL3P	CMP/CL3P/FPLP FT6	PLENUM	NOT SHIELDED	STRANDED	217	43.52
	P40030	SY 18/8 STR CU N/S CMP/CL3P	CMP/CL3P/FPLP FT6	PLENUM	NOT SHIELDED	STRANDED	237	56.56
	P40166	SY 18/10 STR CU N/S CMP/CL3P	CMP/CL3P/FPLP FT6	PLENUM	NOT SHIELDED	STRANDED	280	70.30
	P50032	SY 16/2 STR CU N/S CMP/CL3P	CMP/CL3P/FPLP FT6	PLENUM	NOT SHIELDED	STRANDED	174	23.21
	P50059	SY 16/4 STR CU N/S CMP/CL3P	CMP/CL3P/FPLP FT6	PLENUM	NOT SHIELDED	STRANDED	201.8	42.35
	P60040	SY 14/2 CU CL3P/FPLP	CL3P/ FPLP FT6	PLENUM	NOT SHIELDED	STRANDED	200	33.83
	P70031	SY 12/2 STR CU N/S CMP/CL3P	CL3P/ FPLP FT6	PLENUM	NOT SHIELDED	STRANDED	251	52.25

MULTICONDUCTOR RISER RATED SHIELDED BARE COPPER / PVC

MULTICONDUCTOR RISER RATED SHIELDED BARE COPPER / PVC



WE'VE GOT IT
MADE IN AMERICA™



75°C, 300V RISER RATED

APPLICATIONS

Remote Control, Signalling, and Power-Limited circuits per NEC Article 725. 22AWG - 16 AWG also as communication circuits per NEC Article 800. Security, sound and audio, speaker cable, public address, intercom, sound reinforcement, alarm and access control circuits and power-limited controls.

CONSTRUCTION

- CONDUCTOR Stranded or solid bare copper as indicated on individual product specifications.
- INSULATION PVC or Polypropylene
- COLOR CODE Listed below chart. Also listed for each item on individual specification sheets.
- SHIELDING Overall - Aluminum foil, polyester reinforced tape and stranded tinned copper drain wire.
- ASSEMBLY Cabled, Shielded, ripcord under jacket; jacketed.
- JACKET PVC

SPECIFICATIONS

- UL 444 CMR, NEC article 800
- UL 1424 FPLR, NEC article 760
- UL 13 CL3R, NEC article 725
- Flame Test UL 1666 Vertical Riser / CSA FT4 (UL 1581)
- CSA C22.2 CMG by C(UL)
- Directive (EU) 2015 / 863 – RoHS 3

TYPE	PRODUCT BASE #	DESCRIPTION	RATING	UL TYPE	SHIELDING	CONDUCTOR TYPE	CB NOM DIA MIL	CB LBS/ MFT
MULTICONDUCTOR SHIELDED RISER	R29575	SY 22/2PR STR CU EPS CMR/CL3R	CMR/CL3R/FPLR SUN RES CMG FT4	RISER	SHIELDED	STRANDED	166	18.60
	R20007	SY 22/2 STR CU OAS CMR/CL3R	CMR/CL3R/FPLR SUN RES CMG FT4	RISER	SHIELDED	STRANDED	127	10.30
	R20030	SY 22/4 STR CU OAS CMR/CL3R	CMR/CL3R/FPLR SUN RES CMG FT4	RISER	SHIELDED	STRANDED	146	16.05
	R20076	SY 22/6 STR CU OAS CMR/CL3R	CMR/CL3R/FPLR SUN RES CMG FT4	RISER	SHIELDED	STRANDED	172	22.34
	R20024	SY 22/8 STR CU OAS CMR/CL3R	CMR/CL3R/FPLR SUN RES CMG FT4	RISER	SHIELDED	STRANDED	181	28.31
	R20081	SY 22/12 STR CU OAS CMR/CL3R	CMR/CL3R/FPLR SUN RES CMG FT4	RISER	SHIELDED	STRANDED	225	41.11
	R30024	SY 20/2 STR CU OAS CMR/CL3R	CMR/CL3R/FPLR SUN RES CMG FT4	RISER	SHIELDED	STRANDED	138	13.19
	R40013	SY 18/2 STR CU OAS CMR/CL3R	CMR/CL3R/FPLR SUN RES CMG FT4	RISER	SHIELDED	STRANDED	161	16.85
	R40003	SY 18/3 STR CU OAS CMR/CL3R	CMR/CL3R/FPLR SUN RES CMG FT4	RISER	SHIELDED	STRANDED	171	23.21
	R40005	SY 18/4 STR CU OAS CMR/CL3R	CMR/CL3R/FPLR SUN RES CMG FT4	RISER	SHIELDED	STRANDED	180	30.04
	R40611	SY 18/6 STR CU OAS CMR/CL3R	CMR/CL3R/FPLR SUN RES CMG FT4	RISER	SHIELDED	STRANDED	214	42.72
	R40014	SY 18/8 STR CU OAS CMR/CL3R	CMR/CL3R/FPLR SUN RES CMG FT4	RISER	SHIELDED	STRANDED	229.7	54.80
	R40075	SY 18/12STR CU OAS CMR/CL3R	CMR/CL3R/FPLR SUN RES CMG FT4	RISER	SHIELDED	STRANDED	277.3	78.55
	A50039	SY 16/2 STR CU OAS CMR/CL3R	CMR/CL3R/FPLR SUN RES CMG FT4	RISER	SHIELDED	STRANDED	191	25.36
	R50044	SY 16/3 STR CU OAS CMR/CL3R	CMR/CL3R/FPLR SUN RES CMG FT4	RISER	SHIELDED	STRANDED	193	33.76
	R50031	SY 16/4 STR CU OAS CMR/CL3R	CMR/CL3R/FPLR SUN RES CMG FT4	RISER	SHIELDED	STRANDED	212	43.25
	R60052	SY 14/2 STR CU OAS CL3R/FPLR	CL3R/FPLR SUN RES	RISER	SHIELDED	STRANDED	218	36.97
	R70010	SY 12/2 STR CU OAS CL3R/FPLR	CL3R/FPLR SUN RES	RISER	SHIELDED	STRANDED	266	54.54
R70010	SY 12/2 STR CU OAS CL3R/FPLR	CL3R/FPLR SUN RES	RISER	SHIELDED	STRANDED	266	54.54	

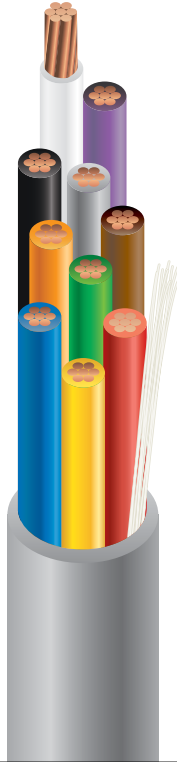
MULTICONDUCTOR

MULTICONDUCTOR RISER RATED UNSHIELDED STRANDED BC PVC

MULTICONDUCTOR RISER RATED UNSHIELDED STRANDED BC PVC



WE'VE GOT IT
MADE IN AMERICA™



75°C, 300V RISER RATED

APPLICATION

Remote Control, Signalling, and Power-Limited circuits per NEC Article 725. 22AWG - 6 AWG also as communication circuits per NEC Article 800. Security, sound and audio, speaker cable, public address, intercom, sound reinforcement, alarm and access control circuits and power-limited controls.

CONSTRUCTION

- CONDUCTOR Stranded or solid bare copper as indicated on individual product specifications.
- INSULATION PVC
- SHIELDING Unshielded
- ASSEMBLY Cabled, with ripcord, and jacketed.
- JACKET PVC

SPECIFICATIONS

- UL 444 CMR, NEC article 800
- UL 1424 FPLR, NEC article 760
- UL 13 CL3R, NEC article 725
- Flame Test UL 1666 Vertical Riser / CSA FT4 (UL 1581)
- CSA C22.2 CMG by C(UL)
- Directive (EU) 2015 / 863 – RoHS 3

MULTICONDUCTOR

TYPE	PRODUCT BASE #	DESCRIPTION	RATING	UL TYPE	SHIELDING	CONDUCTOR TYPE	CB NOM DIA MIL	CB LBS/ MFT
MULTICONDUCTOR RISER RATED UNSHIELDED STRANDED BC PVC	R20004	SY 22/2 STR CU N/S CMR/CL3R	CMR/CL3R/FPLR SUN RES CMG FT4	RISER	NOT SHIELDED	STRANDED	120	8.452
	R20025	SY 22/8 STR CU N/S CMR/CL3R	CMR/CL3R/FPLR SUN RES CMG FT4	RISER	NOT SHIELDED	STRANDED	181	26.42
	R20045	SY 22/4 STR CU N/S CMR/CL3R	CMR/CL3R/FPLR SUN RES CMG FT4	RISER	NOT SHIELDED	STRANDED	149	15.66
	R20047	SY 22/6 STR CU N/S CMR/CL3R	CMR/CL3R/FPLR SUN RES CMG FT4	RISER	NOT SHIELDED	STRANDED	157	20.31
	R20051	SY 22/10 STR CU N/S CMR/CL3R	CMR/CL3R/FPLR SUN RES CMG FT4	RISER	NOT SHIELDED	STRANDED	194	32.02
	R20487	SY 22/12 STR CU N/S CMR/CL3R	CMR/CL3R/FPLR SUN RES CMG FT4	RISER	NOT SHIELDED	STRANDED	225	38.88
	R30017	SY 20/2 STR CU N/S CMR/CL3R	CMR/CL3R/FPLR SUN RES CMG FT4	RISER	NOT SHIELDED	STRANDED	132	11.34
	R40001	SY 18/2 STR CU N/S CMR/CL3R	CMR/CL3R/FPLR SUN RES CMG FT4 MSHA 300V	RISER	NOT SHIELDED	STRANDED	144	14.82
	R40015	SY 18/6 STR CU N/S CMR/CL3R	CMR/CL3R/FPLR SUN RES CMG FT4	RISER	NOT SHIELDED	STRANDED	212	41.09
	R40018	SY 18/2 STR CU N/S CMR/CL3R	CMR/CL3R/FPLR SUN RES CMG FT4	RISER	NOT SHIELDED	STRANDED	144	14.83
	R40024	SY 18/12 STR CU N/S CMR/CL3R	CMR/CL3R/FPLR SUN RES CMG FT4	RISER	NOT SHIELDED	STRANDED	271	75.76
	R40048	SY 18/3 STR CU N/S CMR/CL3R	CMR/CL3R/FPLR SUN RES CMG FT4	RISER	NOT SHIELDED	STRANDED	153	20.79
	R40049	SY 18/4 STR CU N/S CMR/CL3R	CMR/CL3R/FPLR SUN RES CMG FT4	RISER	NOT SHIELDED	STRANDED	166	28.80
	R40052	SY 18/8 STR CU N/S CMR/CL3R	CMR/CL3R/FPLR SUN RES CMG FT4	RISER	NOT SHIELDED	STRANDED	230	53.17
	R40054	SY 18/10 STR CU N/S CMR/CL3R	CMR/CL3R/FPLR SUN RES CMG FT4	RISER	NOT SHIELDED	STRANDED	262	64.05
	R50003	SY 16/2 STR CU N/S CMR/CL3R	CMR/CL3R/FPLR SUN RES CMG FT4	RISER	NOT SHIELDED	STRANDED	174	22.08
	R50045	SY 16/4 STR CU N/S CMR/CL3R	CMR/CL3R/FPLR SUN RES CMG FT4	RISER	NOT SHIELDED	STRANDED	212	41.16
	R60012	SY 14/2 STR CU N/S CL3R/FPLR	CL3R/FPLR SUN RES	RISER	NOT SHIELDED	STRANDED	223	35.53
	R60014	SY 14/4 STR CU N/S CL3R/FPLR	CL3R/FPLR SUN RES	RISER	NOT SHIELDED	STRANDED	263	66.41
	R70003	SY 12/2 STR CU N/S CL3R/FPLR	CL3R/FPLR SUN RES	RISER	NOT SHIELDED	STRANDED	266	52.45

LOW VOLTAGE LANDSCAPE LIGHTING ULEC

LOW VOLTAGE LANDSCAPE LIGHTING ULEC



WE'VE GOT IT
MADE IN AMERICA™



60C, 30 Volts

APPLICATION

- Outdoor Low-Voltage Underground Landscape Lighting Cable is designed for landscape, security, and outdoor accent lighting applications
- Landscape Lighting Cable is Sunlight Resistant suitable for Direct Burial Stranded Copper Conductor Black PVC Insulation/Jacket.

CONSTRUCTION

- Two fully annealed bare stranded copper conductors
- Insulation/Jacket: Premium-grade PVC -20°C to +60°C
- Final assembly: Insulated/Jacketed conductors duplexed in a flat construction for easy tear-down during installation
- Color: Black

SPECIFICATIONS

- Meets UL Subj 1493 cUL standards C22.2 35, CSA class 5834-01
- Underground Low-Energy Circuit Cable (ULEC)
- Directive (EU) 2015/863 – RoHS 3

TYPE	PRODUCT BASE #	DESCRIPTION	RATING	UL TYPE	SHIELDING	CONDUCTOR TYPE	CB NOM DIA MIL	CB LBS/ MFT
LANDSCAPE LGHT	55271	8-164 2/C LOW VOLT LANDSCAPE LGHT	30VAC	ULEC	NOT SHIELDED	STRANDED	546	150.6
LANDSCAPE LGHT	55266	16-26 2/C LOW VOLT LANDSCAPE LGHT	30VAC	ULEC	NOT SHIELDED	STRANDED	277	30.66
LANDSCAPE LGHT	55267	14-41 2/C LOW VOLT LANDSCAPE LGHT	30VAC	ULEC	NOT SHIELDED	STRANDED	318	42.58
LANDSCAPE LGHT	55269	12-65 2/C LOW VOLT LANDSCAPE LGHT	30VAC	ULEC	NOT SHIELDED	STRANDED	388	62.63
LANDSCAPE LGHT	55272	10-104 2/C LOW VOLT LANDSCAPE LGHT	30VAC	ULEC	NOT SHIELDED	STRANDED	382	85.69

LANDSCAPE LIGHTING

COAX RG59, RG6, RG11 CATV, SIAMESE COMBO, & CCTV

COAX RG59, RG6, RG11 CATV, SIAMESE COMBO, & CCTV



CATV Applications for distributing television signals, using “F” connectors, ALUMINUM BRAID CCTV Applications for surveillance; Connecting security cameras, DVR or monitor using “BNC” connectors, COPPER BRAID

CONSTRUCTION

NON-PLENUM

CONDUCTOR: Copper Clad Steel (CCS) or Solid Bare Copper (BC) as indicated.

INSULATION: Non-Plenum Cables: Foamed polyethylene.

JACKET: Non-Plenum Cables: PVC.

PLENUM

CONDUCTOR: Copper Clad Steel (CCS) or Solid Bare Copper (BC) as indicated.

INSULATION: Plenum Cables: Foamed Fluoropolymer

JACKET: Plenum Rated Cables: LS-PVC; for Outdoor Cables: PE

SPECIFICATIONS

- FLAME TEST: Non-Plenum
- CABLES: UL 1685 / CSA FT1.
- PLENUM CABLES: NFPA 262 / CSA FT6

TYPE	PRODUCT BASE #	DESCRIPTION	RATING	UL TYPE	SHIELDING	CONDUCTOR TYPE	CB NOM DIA MIL	CB LBS/ MFT
COAX RG11 CCTV	992161	RG11 14 BC SOL CU 95	CM/CL2 SUN RES	CM/CL2	SHIELDED	SOLID	405	80.71
COAX RG11 CCTV	191037	RG11 14 SOL CU DUALAL DIRECT BURIAL	DIRECT BURIAL	non- UL	SHIELDED	SOLID	405	73.48
COAX RG6 CCTV	921003	RG6 18 SOL CU 95 CMP	CL2P CMP FT6	PLENUM	SHIELDED	SOLID	228	33.13
COAX RG6 CCTV	92061	RG6CC 18 SOL CU 95 NR	DIRECT BURIAL	non- UL	SHIELDED	SOLID	268	31.04
COAX RG6 CCTV	92045	RG6 18 SOL CU 95 NR	CL2 SUN RES	CL2	SHIELDED	SOLID	268	35.28
COAX RG6 CCTV	192061	RG6 18 SOL CU 95 DIRECT BURIAL	DIRECT BURIAL	non- UL	SHIELDED	SOLID	264	31.59
COAX RG59 CCTV	99969	RG59 20 SOL CU 95 CMP	CL2P CMP FT6	PLENUM	SHIELDED	SOLID	196	25.26
COAX RG59 CCTV	92074	RG59 20 SOL CU 95 NR	CL2 SUN RES	CL2	SHIELDED	SOLID	234	27.78
COAX RG59 CCTV	991055	RG59CC 22STRCU 95 NR	CL2 SUN RES	CL2	SHIELDED	SOLID	234	26.73
COAX RG59 CCTV	192115	RG59 20 SOL CU 95 DIRECT BURIAL	DIRECT BURIAL	non- UL	SHIELDED	SOLID	240	26.10
COAX COMBO CCTV	993265	RG6-CCTV AND 18/2 SIAMESE CMP	CL2P/CMP FT6	PLENUM	SHIELDED	SOLID	396	55.44
COAX COMBO CCTV	993256	RG59-CCTV AND 18/2 SIAMESE CMP	CL2P/CMP FT6	PLENUM	SHIELDED	SOLID	368	46.72
COAX COMBO CCTV	99979	RG59-CCTV +18/2 PWR ROUND CL2P	CL2P	PLENUM	SHIELDED	SOLID	224	46.46
COAX COMBO CCTV	993267	RG6-CCTV AND 18/2 SIAMESE CM	CM/CL2 SUN RES	CM/CL2	SHIELDED	SOLID	455	59.10
COAX COMBO CCTV	99511	RG59-CCTV CCA BR+18/2 SIAM CM	CM/CL2 SUN RES	CM/CL2	SHIELDED	SOLID	425	45.53
COAX COMBO CCTV	993253	RG59-CCTV AND 18/2 SIAMESE CM	CM/CL2 SUN RES	CM/CL2	SHIELDED	SOLID	421	50.10
COAX COMBO CCTV	993254	RG59-CCTV AND 18/2 SIAM PE NU	DIRECT BURIAL SUN RES	non- UL	SHIELDED	SOLID	421	43.68
COAX COMBO CCTV	92094	RG59-CCTV +18/2 PWR -ROUND CL2	CL2 SUN RES	CL2	SHIELDED	SOLID	294	60.64

CONTINUED

COAX

COAX RG59, RG6, RG11 CATV, SIAMESE COMBO, & CCTV

COAX RG59, RG6, RG11 CATV, SIAMESE COMBO, & CCTV

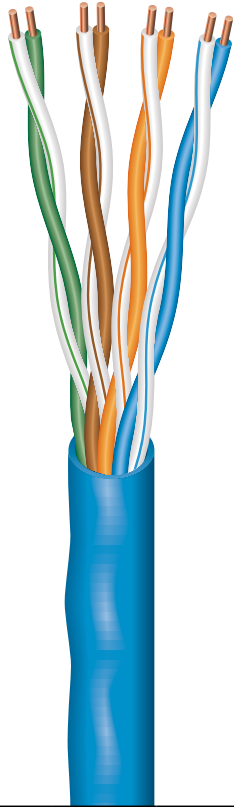
CONTINUED

TYPE	PRODUCT BASE #	DESCRIPTION	RATING	UL TYPE	SHIELDING	CONDUCTOR TYPE	CB NOM DIA MIL	CB LBS/ MFT
COAX RG11 CATV	992153	RG11CATV 14 SOL CU F/60 CM	CM OR CL2 OR CATV SUN RES	CM/CL2	SHIELDED	SOLID	404.2	56.77
COAX RG11 CATV	992155	RG11CATV 14 SOL CCS F/60 CM	CM OR CL2 OR CATV SUN RES	CM/CL2	SHIELDED	SOLID	404.2	54.82
COAX RG11 CATV	821010	RG11CATVP 14 SOL CCS QUAD CL2P	CMP/CL2P/CATVP FT6	PLENUM	SHIELDED	SOLID	382.5	59.42
COAX RG11 CATV	821013	RG11CATVP 14 SOL CCS F/60 CL2P	CMP/CL2P/CATVP FT6	PLENUM	SHIELDED	SOLID	347.3	53.24
COAX RG11 CATV	99901	RG11 14BC 65TC CMP WH	CMP/CL2P/CATVP FT6	PLENUM	SHIELDED	SOLID	341.3	62.08
COAX RG11 CATV	992165	RG11CATV 14 SOL CCS QUAD CM	CM OR CL2 OR CATV SUN RES	CM/CL2	SHIELDED	SOLID	435.5	61.71
COAX RG6 CATV QUAD SHIELD	920413	RG6CATVR 18 SOL CCS QUAD CMR	CMR OR CL2R OR CATVR CMG FT4 SUN RES	RISER	SHIELDED	SOLID	300	30.14
COAX RG6 CATV DUAL SHIELD	920036	RG6 CATVR 18 SOL CCS F/60 CMR	CMR OR CL2R OR CATVR CMG FT4 SUN RES	RISER	SHIELDED	SOLID	274.7	27.45
COAX RG6 CATV DUAL SHIELD	921007	RG6 18 SOL CU F/90 CMP	CMP OR CL2P FT6	PLENUM	SHIELDED	SOLID	231.3	
COAX RG6 CATV DUAL SHIELD	921009	RG6 18 SOL CU F/80 CMP	CMP OR CL2P FT6	PLENUM	SHIELDED	SOLID	231.3	25.24
COAX RG6 CATV DUAL SHIELD	99911	RG6 18 SOL CU F/40 CMP	CMP OR CL2P FT6	PLENUM	SHIELDED	SOLID	274.5	29.50
COAX RG6 CATV QUAD SHIELD	920414	RG6CATV 18 SOL CU QUAD CM	CM OR CL2 OR CATV SUN RES	CM/CL2	SHIELDED	SOLID	300	28.78
COAX RG6 CATV QUAD SHIELD	92049	RG6CATV 18 SOL CU F/60 CM	CM OR CL2 OR CATV SUN RES	CM/CL2	SHIELDED	SOLID	274.7	26.09
COAX RG6 CATV QUAD SHIELD	92042	RG6CATV 18 SOL CCS QUAD VALUE CM	CM OR CL2 OR CATV SUN RES	CM/CL2	SHIELDED	SOLID	300	27.63
COAX RG6 CATV QUAD SHIELD	92041	RG6CATV 18 SOL CCS QUAD CM	CM OR CL2 OR CATV SUN RES	CM/CL2	SHIELDED	SOLID	300	28.29
COAX RG6 CATV QUAD SHIELD	992151	RG6CATV 18 SOL CCS QUAD CM	CM OR CL2 OR CATV SUN RES	CM/CL2	SHIELDED	SOLID	620	58.66
COAX RG6 CATV DUAL SHIELD	92003	RG6CATV 18 SOL CCS F/60 CM	CM OR CL2 OR CATV	CM/CL2	SHIELDED	SOLID	270	24.64
COAX RG6 CATV QUAD SHIELD	992132	RG6CATV 18 SOL CCS F/60 CM	CM OR CL2 OR CATV SUN RES	CM/CL2	SHIELDED	SOLID	560	50.97
COAX RG6 CATV DUAL SHIELD	92008	RG6CATV 18 SOL CCS F/40 CM	CM OR CL2 OR CATV	CM/CL2	SHIELDED	SOLID	269	22.49
COAX RG6 CATV	92071	RG6 18 SOL CCS QUAD DIRECT BURIAL	DIRECT BURIAL	non- UL	SHIELDED	SOLID	300	25.37
COAX RG6 CATV	992479	RG6 18 SOL CCS F/60 DIRECT BURIAL	DIRECT BURIAL	non- UL	SHIELDED	SOLID	274.7	22.68
COAX RG6 CATV QUAD SHIELD	921019	RG6 18 SOL CCS QUAD CMP	CMP OR CL2P FT6	PLENUM	SHIELDED	SOLID	274.5	29.02
COAX RG6 CATV DUAL SHIELD	921015	RG6 18 SOL CCS F/80 CMP	CMP OR CL2P FT6	PLENUM	SHIELDED	SOLID	231.3	24.55
COAX RG59 CATV	99520	RG59 STRCU 95 CMR	CMR OR CL2R SUN RES CMG FT4	RISER	SHIELDED	SOLID	236	23.47
COAX RG59 CATV	92009	RG59CATV 22CCS DUAL F+60AL CM	CM OR CL2 OR CATV SUN RES	CM/CL2	SHIELDED	SOLID	240.7	19.49
COAX RG59 CATV	92006	RG59CATV 22 SOL CCS F/40 CM	CM OR CL2 OR CATV SUN RES	CM/CL2	SHIELDED	SOLID	240.7	18.30

COAX

CATEGORY CAT5E CABLES

CATEGORY CAT5E CABLES



75°C 300V RATED

APPLICATION

Digital Surveillance Camera MJPG and MPEG4, RS422 extension, Video, Multi-media, and voice circuits, ISDN, 100Mbps ANSI X3T9.5, 100VG-Anylan, 10 Base-T (IEEE 802.3), Token Ring (IEEE 805.5); 100 Base-T (Fast Ethernet); 1000 Base-T (Gigabit Ethernet)

CONSTRUCTION

- CONDUCTOR 24 AWG Solid bare copper.
- INSULATION HDPE , FEP or Polypropylene depending on cable type
- COLOR CODE Orange & White/Orange L. - Green & White/Green L. -- Blue & White Blue L. -- Brown & White/Brown L.
- SHIELDING Unshielded
- ASSEMBLY Four twisted pairs, cabled and jacketed overall.
- Jacket PVC on Riser rated, LS PVC on Plenum rated
- Various jacket colors available

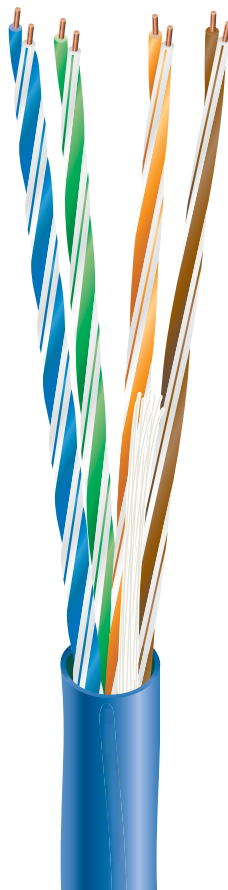
SPECIFICATIONS

- FLAME TEST UL 1666 (for Riser) or NFPA 262 / UL 910 (for Plenum)
- Meets or exceeds TIA/EIA 568-C.2
- NEC ARTICLE 800
- Directive (EU) 2015/863 – RoHS 3
- Type CL2
- C22.2 214 TYPE CMH

TYPE	PRODUCT BASE #	DESCRIPTION	RATING	UL TYPE	SHIELDING	CONDUCTOR TYPE	CB NOM DIA MIL	CB LBS/ MFT
DATA CABLE CAT5e	96263	CAT5E 24/4PR SOL CU UTP CMR 350	CMR SUN RES FT4	RISER	NOT SHIELDED	SOLID	198	21.33
DATA CABLE CAT5e	966956	CAT5E 24/4PR SOL CU UTP CMP 350	CMP FT6	PLENUM	NOT SHIELDED	SOLID	173.6	19.61
DATA CABLE CAT5e	H90558	CAT5E 24/4PR SOL CU UTP DIR BUR	DIRECT BURIAL		NOT SHIELDED	SOLID	235	27.58
DATA COMBO	97394	CAT5E 24/4PR & 18/2 CMR/CL3R	CMR/CL3R & CMG FT4	RISER	NOT SHIELDED	SOLID	384	41.12

POE LP RATED CAT6

POE LP RATED CAT6



APPLICATION

Southwire Cat 6 unshielded plenum rated twisted pair cable is a high performance data communication cable. This ethernet cable is designed for indoor and riser network installations type CMR, may be used in Ethernet Networking system, PoE applications, Video MPEG4 / M-JPEG / Digital / Analog / Baseband / Broadband and other Multimedia Voice applications.

CONSTRUCTION

- CONDUCTORS: 23 AWG SOLID BARE COPPER
- INSULATION: FEP BLUE & WHITE/BLUE STRIPE; ORANGE & WHITE/ORANGE STRIPE; GREEN & WHITE/GREEN STRIPE; BROWN & WHITE/BROWN STRIPE
- ASSEMBLY: 4 PAIRS INDIVIDUALLY TWISTED, CABLED; UNSHIELDED; AND JACKETED
- JACKET: LS-PVC

SPECIFICATIONS

- Limited Power Rated Data Cable
- PoE Applications
- Designed for indoor and plenum installations
- Unshielded twisted pair cable
- TIA/EIA 568-C.2
- NEC ARTICLE 800
- IEEE 802.3af
- UL 444 CMP
- NFPA 262 (UL 910)/CSA FT6
- RoHS 3 Directive (EU) 2015/863
- C(UL)US LISTED

TYPE	PRODUCT BASE #	DESCRIPTION	UL TYPE	SHIELDING	JACKET COLOR	CONDUCTOR TYPE	JACKET TYPE
DATA CABLE CAT6	I99993-12H	CAT 6 250 MHZ 23/4P SOL BC CMP OE 1000RIB	Plenum	Not Shielded	Orange	23 AWG	LS-PVC
	I99993-9B	CAT 6 250 MHZ 23/4P SOL BC CMP GN 1000PB	Plenum	Not Shielded	Green	23 AWG	LS-PVC
	I99993-8B	CAT 6 250 MHZ 23/4P SOL BC CMP RD 1000PB	Plenum	Not Shielded	Green	23 AWG	LS-PVC
	I99993-8H	CAT 6 250 MHZ 23/4P SOL BC CMP RD 1000RIB	Plenum	Not Shielded	Red	23 AWG	LS-PVC
	I99993-4B	CAT 6 250 MHZ 23/4P SOL BC CMP PK 1000PB	Plenum	Not Shielded	Red	23 AWG	LS-PVC
	I99993-4H	CAT 6 250 MHZ 23/4P SOL BC CMP PK 1000RIB	Plenum	Not Shielded	Pink	23 AWG	LS-PVC
	I99993-13B	CAT 6 250 MHZ 23/4P SOL BC CMP BK 1000PB	Plenum	Not Shielded	Black	23 AWG	LS-PVC
	I99993-13H	CAT 6 250 MHZ 23/4P SOL BC CMP BK 1000RIB	Plenum	Not Shielded	Black	23 AWG	LS-PVC
	I99993-1B	CAT6 250 MHZ 23/4P SOL BC CMP BE 1000PB	Plenum	Not Shielded	Blue	23 AWG	LS-PVC
	I99993-1H	CAT6 250 MHZ 23/4P SOL BC CMP BE 1000RIB	Plenum	Not Shielded	Blue	23 AWG	LS-PVC
	I99993-2B	CAT6 250 MHZ 23/4P SOL BC CMP WHT 1000PB	Plenum	Not Shielded	White	23 AWG	LS-PVC
	I99993-2H	CAT6 250 MHZ 23/4P SOL BC CMP WHT 1000RIB	Plenum	Not Shielded	White	23 AWG	LS-PVC
	I99993-10B	CAT6 250 MHZ 23/4P SOL BC CMP GRY 1000PB	Plenum	Not Shielded	Gray	23 AWG	LS-PVC
	I99993-10H	CAT6 250 MHZ 23/4P SOL BC CMP GRY 1000RIB	Plenum	Not Shielded	Gray	23 AWG	LS-PVC
	I99993-11B	CAT6 250 MHZ 23/4P SOL BC CMP YEL 1000PB	Plenum	Not Shielded	Yellow	23 AWG	LS-PVC
	I99993-11H	CAT6 250 MHZ 23/4P SOL BC CMP YEL 1000RIB	Plenum	Not Shielded	Yellow	23 AWG	LS-PVC
I99993-12B	CAT 6 250 MHZ 23/4P SOL BC CMP OE 1000PB	Plenum	Not Shielded	Orange	23 AWG	LS-PVC	

CATEGORY CABLES

POE LP RATED CAT6E

POE LP RATED CAT6E



APPLICATION

Southwire Cat 6E unshielded twisted pair cable is a high performance data communication cable. This ethernet cable is designed for indoor and plenum network installations type CMP (Plenum rated communication cable), may be used in Ethernet Networking system, PoE applications, Video MPEG4 / M-JPEG / Digital / Analog / Baseband / Broadband and other Multimedia Voice applications. See Resources tab for more information.

CONSTRUCTION

- CONDUCTORS: 23 AWG SOLID BARE COPPER
- INSULATION: HDPE BLUE & WHITE/BLUE STRIPE; ORANGE & WHITE/ORANGE STRIPE; GREEN & WHITE/GREEN STRIPE; BROWN & WHITE/BROWN STRIPE
- ASSEMBLY: 4 PAIRS INDIVIDUALLY TWISTED, CABLED; UNSHIELDED; AND JACKETED
- JACKET: PVC

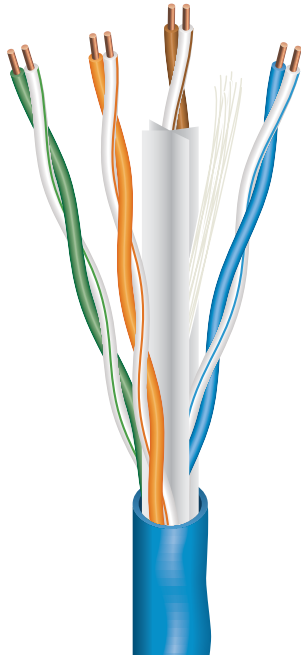
SPECIFICATIONS

- Limited Power Rated Data Cable
- PoE Applications
- Designed for indoor and plenum installations
- Unshielded twisted pair cable
- TIA/EIA 568-C.2
- NEC ARTICLE 800
- IEEE802.3bt
- UL 444 CMP
- NFPA 262 (UL 910)
- RoHS 3 Directive (EU) 2015/863
- C(UL)US LISTED

TYPE	PRODUCT BASE #	DESCRIPTION	UL TYPE	SHIELDING	JACKET COLOR	CONDUCTOR TYPE	JACKET TYPE
DATA CABLE CAT6E	I99997-1A	CAT 6E 550 MHZ 23/4P w/Spline Be CMP 1000R	Plenum	Not Shielded	Blue	23 AWG	LS-PVC
	I99997-1H	CAT 6E 550 MHZ 23/4P w/Spline Be CMP 1000RB	Plenum	Not Shielded	Blue	23 AWG	LS-PVC
	I99997-2A	CAT 6E 550 MHZ 23/4P w/Spline We CMP 1000R	Plenum	Not Shielded	White	23 AWG	LS-PVC
	I99997-2H	CAT 6E 550 MHZ 23/4P w/Spline We CMP 1000RB	Plenum	Not Shielded	White	23 AWG	LS-PVC
	I99997-3A	CAT 6E 550 MHZ 23/4P w/Spline Yw CMP 1000R	Plenum	Not Shielded	Yellow	23 AWG	LS-PVC
	I99997-3H	CAT 6E 550 MHZ 23/4P w/Spline Yw CMP 1000RB	Plenum	Not Shielded	Yellow	23 AWG	LS-PVC
	I99997-13A	CAT 6E 550 MHZ 23/4P w/Spline Bk CMP 1000R	Plenum	Not Shielded	Black	23 AWG	LS-PVC
	I99997-13H	CAT 6E 550 MHZ 23/4P w/Spline Bk CMP 1000RB	Plenum	Not Shielded	Black	23 AWG	LS-PVC

RISER I99980 CAT6A CMR AUGMENTED

RISER I99980 CAT6A CMR AUGMENTED



APPLICATION

Southwire Cat 6A unshielded twisted pair cable is a high performance data communication cable. This ethernet cable is designed for indoor and riser network installations type CMR (Riser rated communication cable), may be used in Ethernet Networking system, PoE applications, Video MPEG4 / M-JPEG / Digital / Analog / Baseband / Broadband and other Multimedia Voice applications. It supports networks up to 10GIGABIT ETHERNET.

CONSTRUCTION

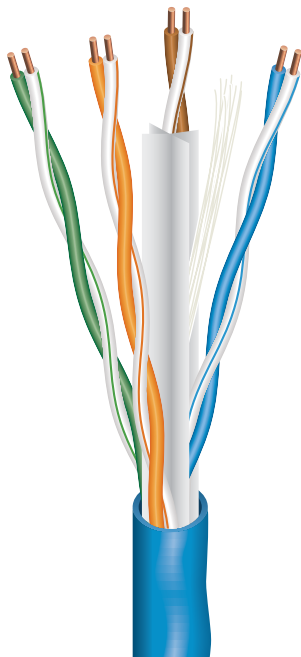
- Conductors: 23 AWG SOLID BARE COPPER
- Insulation: HIGH DENSITY POLYETHYLENE
- COLORS: BLUE & WHITE/BLUE STRIPE; ORANGE & WHITE/ORANGE STRIPE; GREEN & WHITE/GREEN STRIPE; BROWN & WHITE/BROWN STRIPE
- Assembly: 4 PAIRS INDIVIDUALLY UNSHIELDED TWISTED PAIRS –WITH A SPLINE SEPARATOR CABLED AND JACKETED
- Jacket: PVC

SPECIFICATIONS

- Meets or exceeds TIA/EIA 568-C.2 • PoE (IEEE 802.3af) - Without bundle restriction
- NEC ARTICLE 800 • PoE+ (IEEE 802.at) - Without bundle restriction
- Passes IEEE 802.3an • PoE++ (IEEE 802.bt) - 192 bundles
- UL 444 CMR • 4PPoE (IEEE 802.bt) - 192 bundles
- UL 1666 RISER FLAME TEST
- PoH HD BaseT (100W) - 192 bundles
- RoHS-2

TYPE	PRODUCT BASE#	DESCRIPTION	RATING	UL TYPE	SHIELDING	CONDUCTOR TYPE
DATA CABLE CAT6A	I99980	23/4PR SOL BC N/S Cat 6 CMR AUGMENTED	CAT6A AUGMENTED	Riser	NOT SHIELDED	23 AWG SOL

PLENUM I99981 CAT6A CMP AUGMENTED



APPLICATION

Southwire Cat 6A unshielded twisted pair cable is a high performance data communication cable. This ethernet cable is designed for indoor and plenum network installations type CMP (Plenum rated communication cable), may be used in Ethernet Networking system, PoE applications, Video MPEG4 / M-JPEG / Digital / Analog / Baseband / Broadband and other Multimedia Voice applications. It supports networks up to 10 GIGABIT ETHERNET.

CONSTRUCTION

- 23 AWG SOLID BARE COPPER; 4 UNSHIELDED TWISTED PAIRS –WITH A SPLINE SEPARATOR
- INSULATION: FEP
- COLOR CODE: BLUE & WHITE/BLUE STRIPE; ORANGE & WHITE/ORANGE STRIPE; GREEN & WHITE/GREEN STRIPE; BROWN & WHITE/BROWN STRIPE
- SHIELD/DRAIN: UNSHIELDED (UTP)
- ASSEMBLY: 4 PAIRS INDIVIDUALLY TWISTED, CABLED AROUND A SPLINE/FILLER PAIR
- SEPARATOR; UNSHIELDED; AND JACKETED
- JACKET: LS-PVC

SPECIFICATIONS

- Meets or exceeds TIA/EIA 568-C.2
- NEC ARTICLE 800
- Passes IEEE 802.3af
- UL 444 CMP
- NFPA 262 (UL 910)
- Directive (EU) 2015/863 – RoHS 3

TYPE	PRODUCT BASE#	DESCRIPTION	RATING	UL TYPE	SHIELDING	CONDUCTOR TYPE
DATA CABLE CAT6A	I99981	23/4PR SOL BC N/S Cat 6 CMP AUGMENTED	Cat 6A AUGMENTED	PLENUM	NOT SHIELDED	23 AWG SOL

CATEGORY CABLES

SPEAKER CABLE, IN-WALL RATED, STRANDED BARE COPPER

SPEAKER CABLE, IN-WALL RATED, STRANDED BARE COPPER



APPLICATION

Interconnect amplifiers and speakers for Hi-End audio transmission in pro audio, stereo, and hi-fidelity systems. Highly flexible. Listed by UL for use in NEC power-limited circuits except those routed in risers or in plenums. Suitable for use in wet locations, indoor or light duty outdoor use.

CONSTRUCTION

- CONDUCTOR Hi strand count, flexible stranded high conductivity bare copper
- INSULATION Polypropylene low lower capacitance and clear audio response.
- COLOR CODE 2/C Black, Red. 4/C Black, Red, White, Green.
- SHIELDING Unshielded
- ASSEMBLY Cabled, with ripcord, and jacketed.
- JACKET Smooth, round, flexible PVC.

SPECIFICATIONS

- General purpose low voltage and power-limited systems' circuits to NEC Article 725
- NEC Article 800.
- UL listed to UL 13, 444
- FLAME TEST UL 1685 (by UL) / CSA FT1



SPEAKER CABLE

TYPE	PRODUCT BASE #	DESCRIPTION	RATING	SHIELDING	CONDUCTOR TYPE	CB NOM DIA MIL	CB LBS/ MFT
SPEAKER ROUND CABLE	94762	AV 16/2C 65/ST PRO SPK CL3	CM/CL3 SUN RES CMH FT1	NOT SHIELDED	STRANDED	192.0	24.24
	94562	AV 16/2C 65/ST IN-WALL CL3	CM/CL3/FPL/PLTC DIRECT BURIAL SUN RES CMH FT1	NOT SHIELDED	STRANDED	196.0	25.02
	94662	AV 16/2C 26/ST IN-WALL CL3	CM/CL3/FPL/PLTC DIRECT BURIAL AUDIO CABLE SUN RES CMH FT1 MSHA 300V	NOT SHIELDED	STRANDED	198.0	25.19
	94764	AV 16/4C 65/ST PRO SPK CL3	CM/CL3 SUN RES CMH FT1	NOT SHIELDED	STRANDED	223.5	43.23
	94564	AV 16/4C 65/ST IN-WALL CL3	CM/CL3/FPL/PLTC DIRECT BURIAL SUN RES CMH FT1	NOT SHIELDED	STRANDED	228.3	44.90
	94664	AV 16/4C 26/ST IN-WALL CL3	CM/CL3/FPL/PLTC DIRECT BURIAL AUDIO CABLE SUN RES CMH FT1 MSHA 300V	NOT SHIELDED	STRANDED	230.7	44.98
	94642	AV 14/2C 41/ST IN-WALL CL3	CM/CL3/FPL/PLTC DIRECT BURIAL AUDIO CABLE SUN RES CMH FT1 MSHA 300V	NOT SHIELDED	STRANDED	238.0	37.63
	94742	AV 14/2C 105/ST PRO SPK CL3	CM/CL3 SUN RES CMH FT1	NOT SHIELDED	STRANDED	222.0	35.73
	94542	AV 14/2C 105/ST IN-WALL CL3	CM/CL3/FPL/PLTC DIRECT BURIAL SUN RES CMH FT1	NOT SHIELDED	STRANDED	238.0	38.16
	94644	AV 14/4C 41/ST IN-WALL CL3	CM/CL3/FPL/PLTC DIRECT BURIAL AUDIO CABLE SUN RES CMH FT1 MSHA 300V	NOT SHIELDED	STRANDED	279.0	68.76
	94744	AV 14/4C 105/ST PRO SPK CL3	CM/CL3 SUN RES CMH FT1	NOT SHIELDED	STRANDED	259.7	65.15
	94544	AV 14/4C 105/ST IN-WALL CL3	CM/CL3/FPL/PLTC DIRECT BURIAL SUN RES CMH FT1	NOT SHIELDED	STRANDED	279.0	70.00
	94722	AV 12/2C 168/ST PRO SPK CL3	CM/CL3 SUN RES CMH FT1	NOT SHIELDED	STRANDED	278.0	66.96

SECURITY ALARM CABLE SOLID AND STRANDED CM/CL2 RATED

SECURITY ALARM CABLE SOLID AND STRANDED CM/CL2 RATED



APPLICATION

Burglar alarm, Indoor use, interconnect cables to controls systems, Class 2 Power Limited Circuit Cable and Communications Cable for General Purpose Applications General purpose low voltage and power-limited systems.

CONSTRUCTION

- CONDUCTOR 22 AWG solid or stranded Bare Copper
- INSULATION Foam Polypropylene
- COLOR CODE See table
- SHIELDING Unshielded
- ASSEMBLY This cable consists of insulated conductors with an overall extruded jacket.
- JACKET Smooth, round, flexible PVC. Colors: White, Gray, Brown, Beige (Other colors available for minimum order)

SPECIFICATIONS

- FLAME TEST UL 1685 (by UL) / CSA FT1
- CABLE TYPE UL Standard 13 and 444, NEC Articles 725 and 800, CM/CL2
- VOLTAGE 300 V RMS Max.
- TEMPERATURE -20°C to 75°C
- FLAME TEST UL 1685 (by UL) / CSA FT1

TYPE	PRODUCT BASE #	DESCRIPTION	RATING	SHIELDING	CONDUCTOR TYPE	CB NOM DIA MIL	CB LBS/ MFT
SECURITY	51101	SY 22/2 CU N/S CM/CL2	CM/CL2 SUN RES CMX CMH FT1	NOT SHIELDED	STRANDED	110	8.706
SECURITY	51112	SY 22/4 CU N/S CM/CL2	CM/CL2 SUN RES CMX CMH FT1	NOT SHIELDED	STRANDED	126	13.80
SECURITY	96222	SY 22/2 CU N/S CM/CL2	CM/CL2 SUN RES CMX CMH FT1	NOT SHIELDED	SOLID	102	7.308
SECURITY	96238	SY 22/4 CU N/S CM/CL2	CM/CL2 SUN RES CMX CMH FT1	NOT SHIELDED	SOLID	117	11.55

SECURITY ALARM CABLE

LOW VOLTAGE POWER LIMITED LV DIMMING

LOW VOLTAGE POWER LIMITED LV DIMMING



WE'VE GOT IT
MADE IN AMERICA™



16AWG 2/C, 18 AWG 2/C STRANDED UNSHIELDED CMP/CL3P/FPLP CABLE
300V, 75C, PLENUM

CONSTRUCTION

- CONDUCTORS: 16 AWG 7/.0192 or 18 AWG 7/.0152 Stranded Bare Copper
- 2 Conductors Twisted and Jacketed
- INSULATION: LS-PVC
- COLOR: Purple, Pink Per NEMA 100-2021 new guidelines
- SHIELD/DRAIN: UNSHIELDED
- JACKET: LS-PVC, Color: WHITE

APPLICATION

Commercial audio, luminaire, dimming, security and general purpose power limited circuit cable for low voltage cable applications.

SPECIFICATIONS

- UL 444 CMP, NEC article 800
- UL 1424 FPLP, NEC article 760
- UL 13 CL3P, NEC article 725
- CSA C22.2 by C(UL)
- RoHS-2 (European Directive 2011/65/EU)

STOCK CODE	COND. SIZE (AWG)	NO. OF COND.	NO. OF STRANDS	INSULATION THICKNESS (INCH)	INSULATION THICKNESS (MILS)	JACKET THICKNESS (INCH)	JACKET THICKNESS (MILS)	NOMINAL OD (INCH)	NOMINAL OD (MILS)	NOMINAL WEIGHT (LBS/MFT)	NOMINAL WEIGHT (KG/KM)
P41614-1	18	2	7/.0152	0.009	0.229	0.014	0.355	0.152	3.861	16.70	24.85
P51641-1	16	2	7/.0192	0.005	0.127	0.014	0.355	0.178	4.521	24.00	35.71

LOW VOLTAGE DIMMING

DIMMING CONTROL CABLES

DIMMING CONTROL CABLES



SOUTHWIRE SYSTEM CONTROL CABLE

APPLICATION

Electronics cable specifications for select control systems

CONSTRUCTION

- CONDUCTORS: 22 AWG, 1 PAIR STRANDED BC & 18 AWG, 1 PAIR STRANDED BC
- JACKET: PVC
- SHIELD/DRAIN: FOIL, 20 AWG 7 STR TC
- INSULATION: 22 AWG FOAMED PE, COLORS: WHITE, VIOLET
- INSULATION: 18 AWG PVC, COLORS: BLACK, RED

SPECIFICATIONS

- CMR/CL3R
- UL 444/NEC ARTICLE 800/CSA C22.2 by C(UL)
- UL 1666/CSA FT4
- 60C/300V
- ROHS-2 COMPLIANT

TYPE	PRODUCT BASE #	DESCRIPTION	RATING	UL TYPE	SHIELDING	CONDUCTOR TYPE	CB NOM DIA MIL	CB LBS/ MFT
DIMMING CONTROL	M10003	SY 24/1PRSTRSTC OAS CMP/CL3P	CMP/CL3P/FPLP FT6	Plenum	SHIELDED	STRANDED	147	11.67
	T20028	AP 22/5C SOL BC FEP/FEP OAS	CMP/CL3P/FPLP FT6		SHIELDED	SOLID	147	21.96
	H91839	22/2C SH+12/2+18/1 CL3P	LUTR CMP FT6		SHIELDED	STRANDED	265	69.19
	H91837	22/2C SH + 18/2 CMP	LUTR CMP FT6		SHIELDED	STRANDED	218	30.00
	H92132	22/1P SH + 16/1PR CMP /PE	LUTR CMP FT6		SHIELDED	STRANDED	234	37.11
	T50061	16/2C SOL CMP BC	CMP/CL3P/FPLP FT6	Riser	NOT SHIELDED	SOLID	170	26.96
	R21342	22/5C SOL BC SH AWM CMR	CMR/CL3R AWM STYLE 2661 CMG FT4		SHIELDED	SOLID	296	44.08
	H91834	22/2C SH + 18/2C CMR	LUTR & CMR CMG FT4		SHIELDED	STRANDED	265	35.53
	H92130	22/2C SH + 16/2C CMR	LUTR & CMR CMG FT4		SHIELDED	STRANDED	394	73.22
	H91835	22/2C SH + 12/2 + 18/1 CL3R	LUTR & CMR CMG FT4		SHIELDED	STRANDED	404	81.68
	R50325	16/2C SOL BC AWM/CMR N/S	CMR/CL3R AWM STYLE 2661 CMG FT4	PVC	NOT SHIELDED	SOLID	286	40.77
	L40009	18/3 STC OAS CM/CL3/FPL	CM/CL3/FPL CMH FT1		SHIELDED	STRANDED	244	39.27
	L40008	18/2 STC OAS CM/CL3/FPL	CM/CL3/FPL CMH FT1		SHIELDED	STRANDED	222	29.11

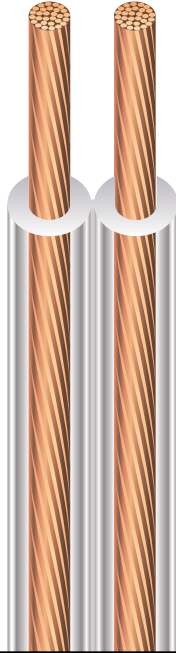
CONTROL SYSTEMS CABLES

ZIP SPEAKER PROFESSIONAL CABLE

ZIP SPEAKER PROFESSIONAL CABLE



WE'VE GOT IT
MADE IN AMERICA™



SOUTHWIRE SIGNAL SPEAKER CABLE, IN-WALL RATED, STRANDED BARE COPPER

APPLICATION

General Purpose Power Limited Circuit Cable. Commercial audio zip speaker cable.

CONSTRUCTION

This cable consists of two bare copper conductors laid flat with an integral insulation and jacket.

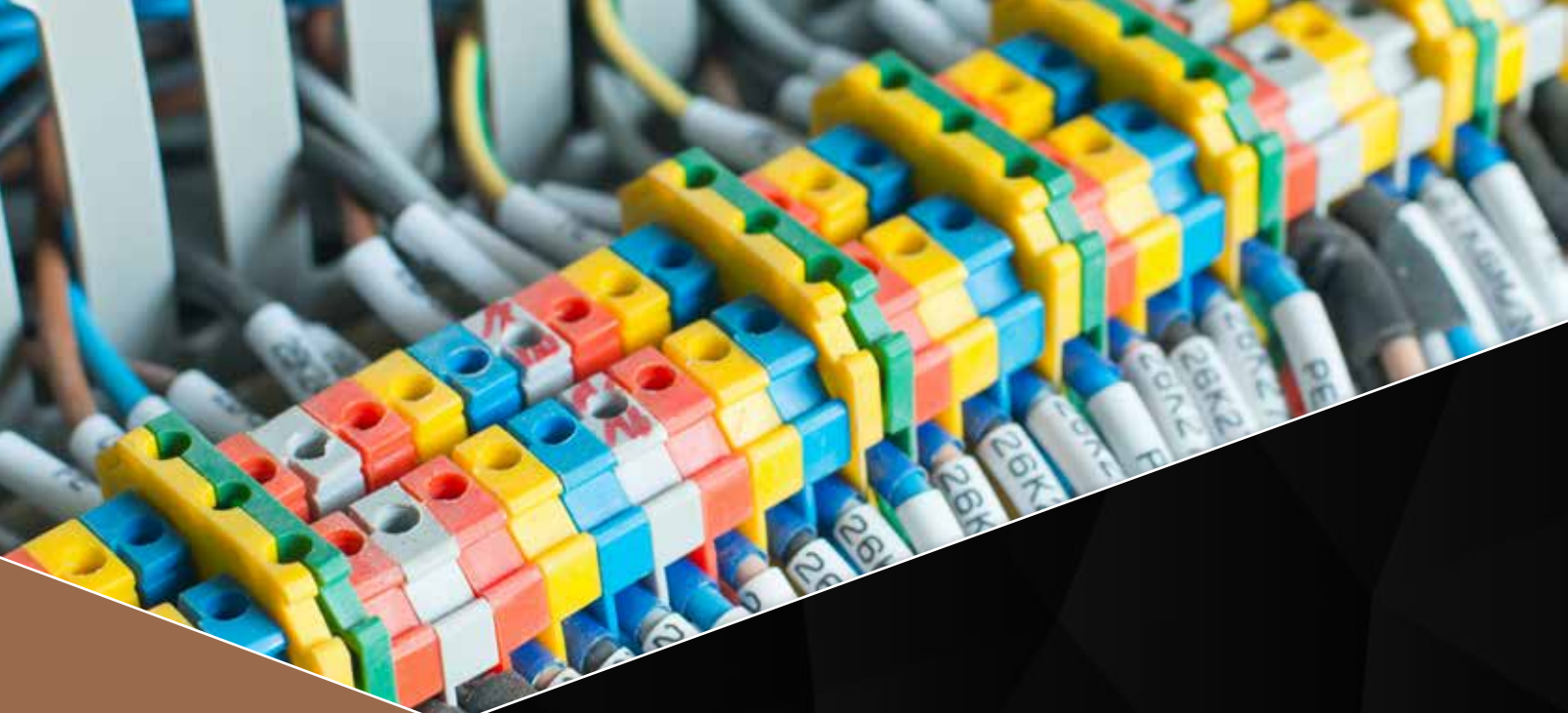
- Jacket: Clear PVC

SPECIFICATIONS

- UL 13 CL2, NEC article 725
- CSA FT1 Flame Test
- CSA CMH
- RoHS-2 (European Directive 201/65/EU)

TYPE	PRODUCT BASE #	DESCRIPTION	RATING	SHIELDING	CONDUCTOR TYPE	CB NOM DIA MIL	CB LBS/MFT	CB LBS/MFT
SPEAKER ZIP CABLE	94616	ZIP SPEAKER 16/2STRCU CL2	CL2 CMH FT1	NOT SHIELDED	STRANDED	266	26.87	85.69
SPEAKER ZIP CABLE	94614	ZIP SPEAKER 14/2STRCU CL2	CL2 CMH FT1	NOT SHIELDED	STRANDED	360	42.7	42.58
SPEAKER ZIP CABLE	94612	ZIP SPEAKER 12/2STRCU CL2	CL2 CMH FT1	NOT SHIELDED	STRANDED	410	66.2	30.66

SPEAKER PROFESSIONAL CABLE



Southwire™

LOW VOLTAGE CATALOG

GET SOCIAL WITH US:



/SOUTHWIRE
/SOUTHWIRETOOLS



@SOUTHWIRETOOLS



@SOUTHWIRE
@SOUTHWIRETOOLS



SOUTHWIRE

SOUTHWIRE.COM | 1-800-444-1700

All Trademarks or Registered Trademarks (TM/®) are owned or licensed by Southwire Company.
Any other TM/® - Trademark or Registered Trademark of Southwire Company.