

SOUTHWIRE COMPANY TRAINING SOLUTIONS

The Southwire Solutions University team is dedicated to training current and future leaders on safe and efficient wire and cable installation methods.

This flyer contains a list of some of our available programs. Training is available virtually, on-site at our SSU facilities, or at your location.

HOW DOES SSU BENEFIT YOU?

Southwire Solutions University allows you to be trained by the industry leader, gain hands-on experience, and learn how to work safely and more productively.

Visit SSU to see how we can help you save time and money on the jobsite.



GET QUALIFIED BY
THE INDUSTRY
LEADER



GAIN HANDS-ON
EXPERIENCE



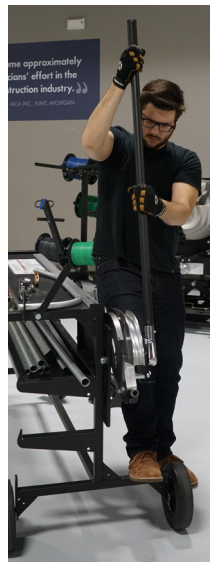
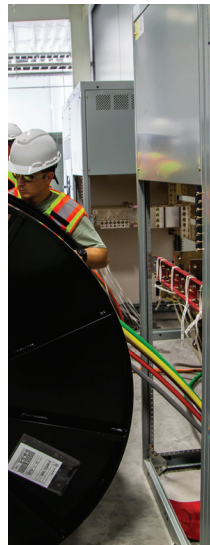
WORK MORE SAFELY
AND PRODUCTIVELY



INCREASE
PROFITABILITY



SCAN TO LEARN MORE
OR CONTACT [SSUADMIN@SOUTHWIRE.COM](mailto:ssuadmin@southwire.com)



PLANNING AND PRE-CONSTRUCTION

Introduction to SIMpull Solutions® Innovations (1 hr.)

- Utilize solutions to increase safety while minimizing total installed cost

Introduction to Configurator Plus™ Web App (1 hr.)

- Learn how the Configurator Plus™ Web App will help you save time and money by:
 - Helping reduce the number of reels on a jobsite
 - Stacking and paralleling of feeder cable
 - Setting up reels to be labeled and eliminating the handling multiple times
 - Identifying and labeling circuits on the reels to be better organized on site
 - Reducing amount of set ups needed by having multiple pulls on a single reel

How SIMpull Solutions® Innovations Promote Safety (45 min.)

- Focus on minimizing safety risks throughout the phases of a job

How SIMpull Solutions® Innovations Address Labor Shortages (45 min.)

- Minimize installation time to maximize labor utilization

Jobsite Planning Custom (1.5 hr.)

- Plan a job using Southwire Solutions and support team
- Customized to market needs

CONDUIT BENDING

Conduit Bending Overview (1 hr.)

- Compare mechanical, electrical, and hydraulic benders
- Evaluate the best bender type for a job

Conduit Bending Tactile Experience (1.5 hr.)

- Optimize bending efficiency with the BENDstation™ work station
- Bend stubs, offsets, and saddles

FEEDER SOLUTIONS

SIMpull Solutions® Innovations Feeder Overview (1 hr.)

- Safely plan feeder pulls
- Maximize pulling efficiency

Planning and Execution: Feeders (1 hr.)

- Consider job conditions when planning feeder pulls

Wire and Cable Pull Calculations (1 hr.)

- Calculate pulling tension
- Calculate sidewall pressure
- Determine equipment for successful pulls

Advanced Wire and Cable Pull Calculations (1 hr.)

- Calculate complex pulls
- Account for multiple raceway types

Feeder Wire and Cable Pulling Tactile Experience (1.5 hr.)

- Place reels safely
- Install proper rope for pull
- Set up puller
- Use remote triggers for communication



SSU

SOUTHWIRE™ SOLUTIONS
UNIVERSITY

TRAINING OFFERINGS



SOUTHWIRE SOLUTIONS FOR YOUR JOBSITE PROBLEMS

A UNIQUE TRAINING EXPERIENCE



SSU is based out of Southwire's Thorn Customer Solutions Center in Carrollton, GA and Santa Fe Springs, CA.

SSU trainings focus on Southwire's unique products and services that promote safety and productivity on every job.

Everything they demonstrated and spoke about in the class, we were actually able to put our hands on.

I think all contractors should come out here and see it.

— Kevin Naquin
M.C. Dean General Superintendent

Anything that I feel like is going to reduce labor, be safer, be quicker, less fatigue on the guys, I'm going to try to implement that into our everyday practices.

— Jeff Jackson
Westland Project Manager



SCAN TO LEARN MORE
OR CONTACT [SSUADMIN@SOUTHWIRE.COM](mailto:ssuadmin@southwire.com)



CIRCUIT SOLUTIONS

SIMpull Solutions® Innovations Circuit Overview (1 hr.)

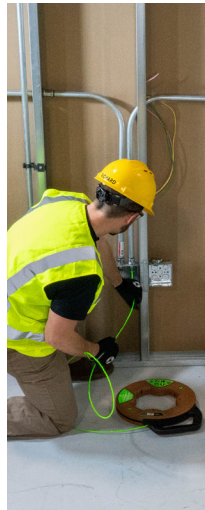
- Planning effective homeruns to maximize efficiency utilizing SIMpull Barrel™ Cable Drums, SIMpull® CoilPAK™ wire payoff, and MC products

Planning and Execution: Circuits (1 hr.)

- Evaluate job types for ideal solutions
- Choose wire solutions based on job conditions
- Choose components to simplify installation

Circuit Wire and Cable Pulling Tactile Experience (1.5 hr.)

- Use SIMpull® CoilPAK™ wire payoff instead of spools
- Differences in rope
- Use the Maxis® XD1 Extreme Duty Circuit Puller



WIRE AND CABLE INSTALLATION METHODS

Low Voltage Cables (1 hr.)

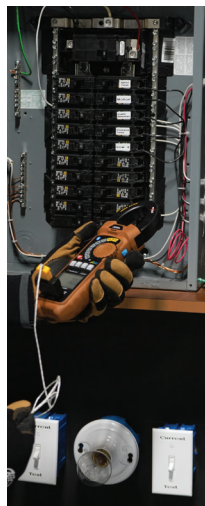
- Identify low voltage cables
- Choose the proper cable type for job requirements

Metal-Clad Cables (1 hr.)

- Simplify power distribution with Feeder and Riser MC
- Save time and money with MCAP® Type MC and MC-PCS Duo™

Industrial Products (1 hr.)

- Installation considerations of Cable-in-Conduit
- Decrease termination time with Machine Flex™ Power Cable
- Determine cable type for hazardous locations



TOOLS AND COMPONENTS

Testing and Meters (1 hr.)

- Overview of meter types
- Basic meter settings and features

Smart Products (1 hr.)

- Use innovative components to maximize efficiency

Temporary Light and Power (1 hr.)

- Safety considerations for temporary light and power
- Plan jobsite lighting and power distribution

 SSU  YOUR LOCATION  VIRTUAL