



SSU

**SOUTHWIRE™ SOLUTIONS
UNIVERSITY**

**AN INTERACTIVE, HANDS-ON
TRAINING EXPERIENCE.**



Southwire®



A UNIQUE TRAINING EXPERIENCE

SSU delivers real-world product training for contractors, distributors and apprenticeships throughout North America. SSU is based out of Southwire's Thorn Customer Solutions Center in Carrollton, GA with more than 15,000 square feet of classroom and hands-on experience areas. SSU training focuses on Southwire's unique products and services that promote safety and productivity on every job.





HOW DOES SSU BENEFIT YOU?

Southwire Solutions University allows you to be trained by the industry leader, gain hands-on experience, and learn how to work safely and more productively. Visit SSU to see how we can help you save time and money on the jobsite.



GET QUALIFIED BY
THE INDUSTRY LEADER



GAIN HANDS-ON
EXPERIENCE



WORK MORE SAFELY
AND PRODUCTIVELY



INCREASE PROFITABILITY





Southwire™

TOOLS & EQUIPMENT



Southwire®



THORN CUSTOMER SOLUTIONS CENTER

Southwire Solutions University is housed in the Thorn Customer Solutions Center in Carrollton, GA. SSU offers an interactive hands-on experience area, including a demonstration job site environment. At Southwire, we believe that tactile experience is the most important aspect of understating the value of our innovative products.

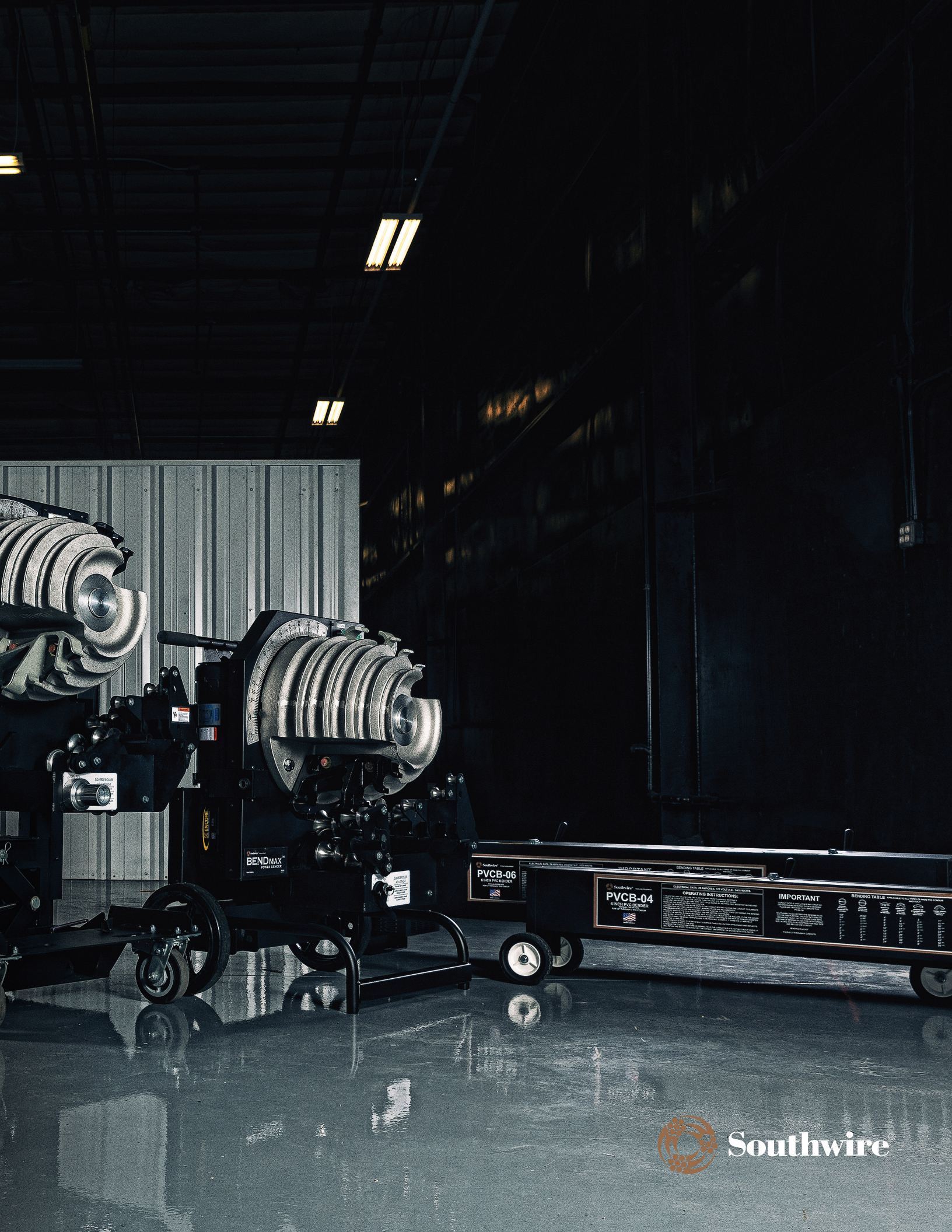


TWO-DAY CONTRACTOR SOLUTIONS EXPERIENCE

This experience covers best practices for a safe and productive cable installation by using Southwire's SIMpull® Solutions products and services. Utilizing classroom training, and hands-on installation, attendees leave SSU with a better understanding of how wire and cable installations can be done safer and more efficiently.

LEARN HOW TO:

Do more with less – Southwire's solutions focus on saving contractors money and time, increasing safety and productivity on the job site.



BENDMAX
4" HIGH PVC BENDER

PVCB-06
6" HIGH PVC BENDER

PVCB-04
4" HIGH PVC BENDER

OPERATING INSTRUCTIONS

IMPORTANT

BENDING TABLE	
	1/2" BEND
	3/4" BEND
	1" BEND
	1 1/4" BEND
	1 1/2" BEND
	2" BEND
	2 1/2" BEND
	3" BEND
	3 1/2" BEND
	4" BEND
	4 1/2" BEND
	5" BEND
	5 1/2" BEND
	6" BEND

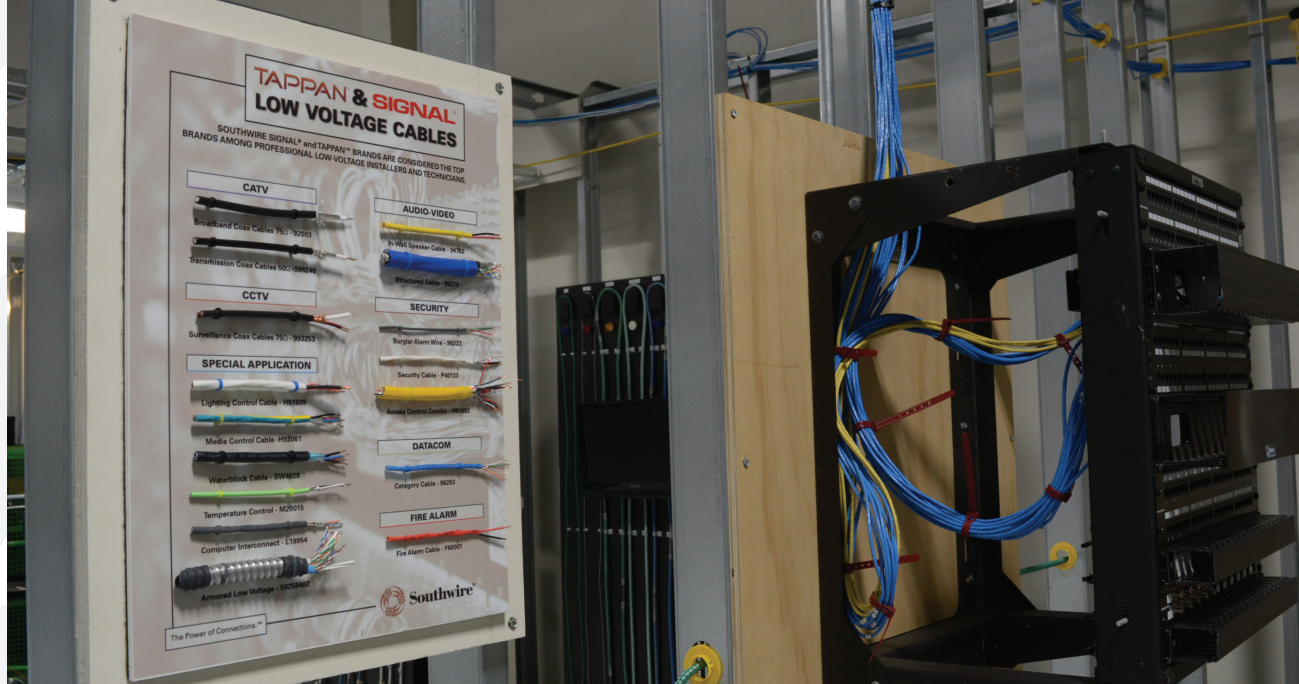


Southwire



Southwire

Southwire
TOOLS & EQUIPMENT
SIMpull CoilPAK
CART
MODEL # CR-01



DON'T JUST TAKE OUR WORD FOR IT...

“Anything that I feel like is going to reduce labor, be safer, be quicker, less fatigue on the guys, I’m going to try to implement that into our everyday practices.”

– Jeff Jackson, Westland Project Manager

“Everything they demonstrated and spoke about in the class, we were actually able to put our hands on. I think all contractors should come out here and see it.”

– Kevin Naquin, M.C. Dean General Superintendent

**WE'VE GOT YOUR
ENTIRE PROJECT
COVERED.**



Southwire®

© 2016 Southwire Company, Inc. All Rights Reserved.® Registered Trademark and TM Trademark of Southwire Company.

INTERESTED IN VISITING SSU?

Contact SSU@Southwire.com, or call us at 770-832-4638,
for more information on how to set up your visit.

For more information on SSU,
visit us at <https://go.bluevolt.com/SSU/Home/?Brand=SSU>.