

## EMT WATERTIGHT CONNECTORS

### 1/2" – 1"

Southwire® SIMPush™ EMT Watertight connectors can be used in wet locations to connect the end of UL-approved thin wall EMT conduit to metal boxes. Removable and reusable with SIMPush™ removal tool.

#### FEATURES:

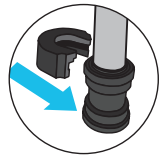
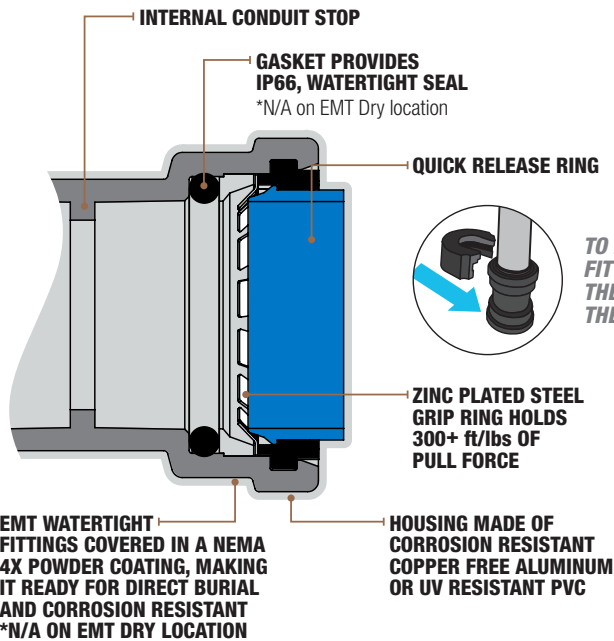
- Corrosion-resistant copper-free diecast aluminum construction
- Provides continuous ground
- Internally coated with lubricating grease
- Tested to 100 removal cycles for reuse
- Locking teeth are constructed from zinc-plated steel
- Includes zinc-plated steel lock nut



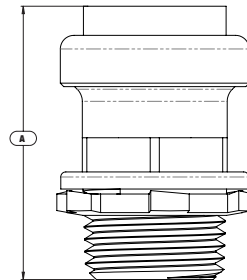
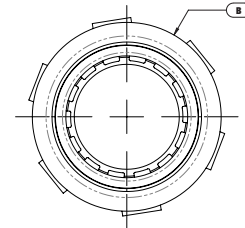
**CERTIFICATIONS/RATINGS:**  
**E-FILE #: E474805**



EPMBX050, EPMBX075, EPMBX100



**TO REMOVE THE SIMPush™ FITTING, SIMPLY SLIDE THE REMOVAL TOOL ONTO THE COLLAR AND PULL**



Stock #	Model #	Trade Size	Quantity Per Box	H (in.) A	W (in.) B	L (in.) B	Associated Removal Tool Model #	Removal Tool Included
<b>CONTRACTOR PACK</b>								
65076902	EW-BC-050WT	1/2"	30	1.663	1.209	1.209	EW-RT-1P	YES
65077102	EW-BC-075WT	3/4"	20	1.663	1.411	1.411	EW-RT-1P	YES
65077202	EW-BC-100WT	1"	12	2.009	1.779	1.779	EW-RT-100	YES

<b>Project Name:</b>
<b>Contractor:</b>
<b>Address:</b>

**BUILT FOR DURABILITY.  
BUILT FOR RELIABILITY.  
BUILT FOR WORK.™**

**1-855-798-6657 | SOUTHWIRETOOLS.COM**

©2020 Southwire Company, LLC. All rights reserved.  
\*Registered Trademark & ™Trademark of Southwire Company, LLC.