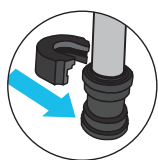
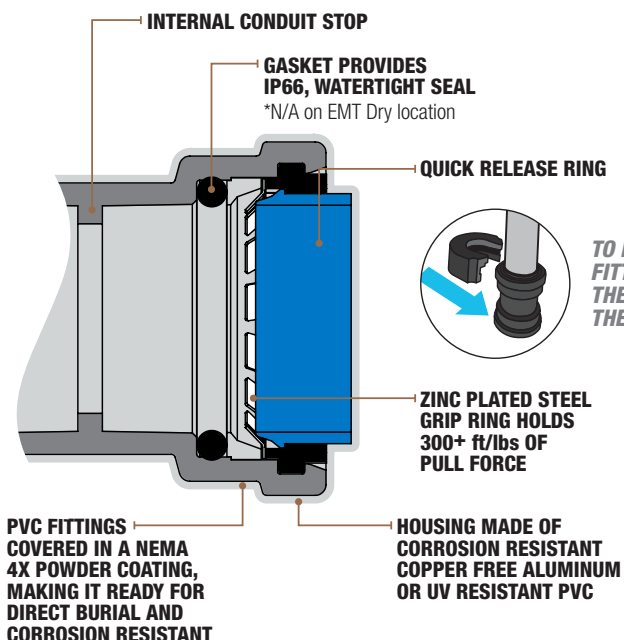


## PVC COUPLINGS

Southwire® SIMPush™ PVC couplings are used in dry or wet locations to connect the end of two UL-approved schedule 40/80 PVC conduits. Removable and reusable with SIMPush™ removal tool.

### FEATURES:

- Durable UV Resistant PVC construction
- PVC internal stiffener for LTNM only
- IP66-Dust tight and protects against powerful jetting water
- Raintight to prevent water from getting into conduit, box, or enclosure
- Concrete-tight
- UL Listed schedule 40/80 PVC conduit suitable for use with 90 °C (194 °F) wiring
- Internally coated with lubricating grease
- Tested to 100 removal cycles for reuse
- Locking teeth are constructed from zinc-plated steel
- Includes zinc-plated steel lock nut



*TO REMOVE THE SIMPush™ FITTING, SIMPLY SLIDE THE REMOVAL TOOL ONTO THE COLLAR AND PULL*

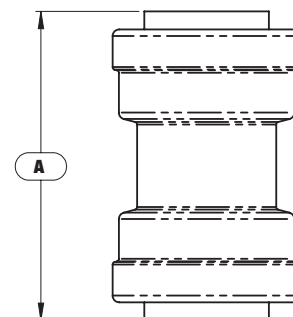
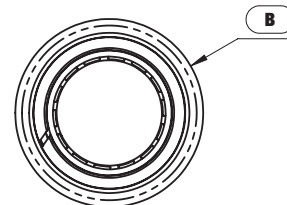
## 1/2" – 1"



**CERTIFICATIONS/RATINGS:**  
**NEMA FB RATED (4X)**  
**E-FILE #: E474447**



PVSC050, PVSC075, PVSC100



Stock #	Model #	Trade Size	Quantity Per Box	H (in.) A	W (in.) B	L (in.) B	Associated Removal Tool Model #	Removal Tool Included
<b>CONTRACTOR PACK</b>								
65083402	P-CP-050WT	1/2"	30	2.325	1.419	1.419	PLT-RT-1P	YES
65083502	P-CP-075WT	3/4"	24	2.437	1.653	1.653	PLT-RT-1P	YES
65083602	P-CP-100WT	1"	20	2.543	1.929	1.929	PLT-RT-100	YES

Project Name:
Contractor:
Address: